



OLD SALEM FARM

SEPTEMBER

2020



Prize List



September 8-13

Level 5 Jumpers – “B” Hunters
\$5,000 USHJA National Hunter Derby
\$25,000 Grand Prix of North Salem
\$75,000 Old Salem Farm Grand Prix

September 15-19

ASPCA Maclay Regionals (Region 2) Level 2 Jumpers – “C” Hunters
\$10,000 OSF Jumper Classic

September 23-27 Fall Classic

Level 2 Jumpers – “A” Hunters
\$5,000 Old Salem Farm Hunter Derby
\$10,000 OSF Jumper Classic



Closing Date: August 31, 2020

Our goal is to help you
pursue yours.
It's that simple.



At Merrill, we'll help you get ready for the future with a financial strategy that's just for you.

The Kincade Group

Stephen M Kincade

Managing Director

Private Wealth Manager

212.680.5976

stephen.kincade@ml.com

Merrill Lynch Wealth Management

One Bryant Park, 28th Floor

New York, NY 10036



Merrill Lynch, Pierce, Fenner & Smith Incorporated (also referred to as "MLPF&S" or "Merrill") makes available certain investment products sponsored, managed, distributed or provided by companies that are affiliates of Bank of America Corporation ("BoFA Corp."). MLPF&S is a registered broker-dealer, Member SIPC and a wholly owned subsidiary of BoFA Corp.

Investment products: **Are Not FDIC Insured** **Are Not Bank Guaranteed** **May Lose Value**

The Bull Symbol and Merrill Lynch are trademarks of Bank of America Corporation.

© 2019 Bank of America Corporation. All rights reserved.

AR9PDGGT Vault-BA159V | MLWM-244-AD | 470948PM-0519 | 05/2019

OLD SALEM FARM HORSE SHOWS

September 8- 13, September 15-19, September 23-27, 2020

Management

Mr. Scott Hakim, Old Salem Farm, President..... Greenwich, CT
Mrs. Suzanne Muratore, Old Salem Farm V.P. of Finance & Operations Newtown, CT
Mr. Allen Rheinheimer, Competition Manager Zionsville, IN
Mr. Kevin Giblin, Assistant Competition Manager..... Wellington, FL
Mrs. Vandy Lipman, Competition Coordinator Bedford, NY
Mr. David Orlando, Feed and Stabling Supervisor Wellington, FL
Ms. Chelsea Dwinell, Sponsorship Ridgefield, CT

Horse Show Office

Mrs. Lori Johnsen, Secretary Wallkill, NY
Ms. Cheryl Francis, Secretary..... Centreville, MD
Ms. Harmony Allers, Secretary Hudson, NY

Awards

Ms. Mrs. Barbara Lang, Presentations Burlington, NJ
Mr. Alan Keely, Ringmaster (Sat and Sun) North Salem, NY

HUNTER/EQUITATION JUDGES

Week I	Week II	Week III
Mr. James Toon South Salem, NY	Mrs. Ellen Toon South Salem, NY	Ms. Creigh Duncan Princeton, NJ
Ms. Nancy Wallis Ewing, NJ	Ms. Annette Mohr Montgomery, NY	Mr. Todd Karn Fayetteville, NY
	Ms. Cynthia Williams Somers, NY	Mr. Walter (Timothy) Kees Norwalk, CT
		Ms. Kathleen Rice Fishkill, NY

JUMPER JUDGES

Mr. Hendrik Nijenhuis Whitehouse Station, NJ
Mr. Kevin Giblin Wellington, FL
Ms. Carolyn Vincent Greenvale, N.Y.

HUNTER COURSE DESIGNER

Mr. Kevin Giblin Wellington, FL
Mr. Allen Rheinheimer Zionsville, IL
Mr. Paul Jewell (Maclay Regionals) Ewing, NJ

JUMPER COURSE DESIGNER

Ms. Nancy Wallis Ewing, NJ
Mr. Paul Jewell Ewing, NJ

STEWARDS

Ms. Maria Biancone, Week 1 and 2 Roseland, NJ
Mr. John Scapelhorn, Week 3 Carmel, NY
Mr. Norman Bray, Week 1 Lincolnale, NY

ANNOUNCERS

Mr. Michael Lowry San Antonio, TX
Mr. Timothy Cleary Hackettstown, NJ
Mr. Kris Scuccimarra Poughquag, NY
Mr. Sergio Del Giudice Hackettstown, NJ

SHOW SERVICES

Miller and Associates, Veterinarian (914) 276-1260 North Salem, NY
EQ Media, Public Relations and Media (612) 206-0310 Wellington, FL
SEL Photography, Horse Show Photographer (845) 519-7227 North Salem, NY
Mr. William LeMoine, Farrier (203) 788-4821 Roxbury, CT
Equine Surgical Facility (845) 878-7500, 13.5 miles New England Equine Practice 2933 Route 22 Paterson NY
Trauma Center (914) 493-7000, 26.7 miles Westchester Medical Center 100 Woods Road Valhalla NY

Sanctioned by:
United States Equestrian Federation, Inc.

2020 OLD SALEM FARM FALL HORSE SHOW WEEK 1

TUESDAY

Htr Ring 8:30 AM

Ticketed Warm Up

Sand Ring 8:00 AM

Ticketed Warm Up

Grand Prix Field 9:00 AM

400 Schooling Jpr 1.0m, II
401 Schooling Jpr 1.10m, II

WEDNESDAY

Htr Ring 8:00 AM

11 Open Hunter
150 3'3" Perf Wkg Htr
151 3'3" Perf Wkg Handy Htr
152 3'3" Perf Wkg Htr
149 3'3" Perf Wkg Htr U/S
155 3'6" Perf Wkg Htr
156 3'6" Perf Wkg Handy Htr
157 3'6" Perf Wkg Htr
154 3'6" Perf Wkg Htr U/S
351 OSF 3' Hunter
352 OSF 3' Hunter
350 OSF 3' Hunter U/S
328 OSF 2'9" Hunter
329 OSF 2'9" Hunter
327 OSF 2'9" Hunter U/S
356 Baby Green Hunter 2'6"
357 Baby Green Hunter 2'6"
355 Baby Green Hunter 2'6" U/S
361 OSF 2'6" Hunter
362 OSF 2'6" Hunter
360 OSF 2'6" Hunter U/S

Sand Ring 8:00 AM

380 Training Jumper .75m
381 Training Jumper .75m
384 Training Jumper .85m
385 Training Jumper .85m
388 Training Jumper .95m
389 Training Jumper .95m
392 Training Jumper 1.0m
393 Training Jumper 1.0m
396 Training Jumper 1.10m
397 Training Jumper 1.10m
450 \$500 5-6 YO Young Jumper 1.15m

Grand Prix Field 9:00 AM

431 Open Jpr 1.10m II, 2.1
420 \$1,000 Open Jpr 1.20m, II, 2.1
423 \$1,500 Open Jpr 1.30m, II, 2.1
449 \$3,000 Open Jpr 1.35m, II, 2.1

THURSDAY

Htr Ring 8:00 AM

12 Open Hunter
123 High Perf Work Htr
124 High Perf Work Handy Htr
125 High Perf Work Htr
122 High Perf Work Htr U/S
128 Green Wkg Htr 3'9"
129 Green Wkg Handy Htr 3'9"
130 Green Wkg Htr 3'9"
127 Green Wkg Htr 3'9" U/S
133 Green Wkg Htr 3'6"
134 Green Wkg Handy Htr 3'6"
135 Green Wkg Htr 3'6" Incentive Round
132 Green Wkg Htr 3'6" U/S
139 Green Wkg Htr 3'3"
140 Green Wkg Handy Htr 3'3"
141 Green Wkg Htr 3'3" Incentive Round
138 Green Wkg Htr 3'3" U/S
371 USHJA 3' Hunter
372 USHJA 3' Hunter
370 USHJA 3' Hunter U/S
366 USHJA 2'9" Hunter
367 USHJA 2'9" Hunter
365 USHJA 2'9" Hunter U/S
376 USHJA 2'6" Hunter
377 USHJA 2'6" Hunter
375 USHJA 2'6" Hunter U/S
185 Local Htr
186 Local Htr
184 Local Htr U/S

Sand Ring 8:00 AM

382 Training Jumper .75m
383 Training Jumper .75m
386 Training Jumper .85m
387 Training Jumper .85m
390 Training Jumper .95m
391 Training Jumper .95m
394 Training Jumper 1.0m
395 Training Jumper 1.0m
398 Training Jumper 1.10m
399 Training Jumper 1.10m
452 \$500 5-6 YO Young Jumper 1.20m
440 Ch/Adult Am Jpr 1.0m, II, 2.b
445 OSF Ch/Adult Jumper .85m

Grand Prix Field 9:00 AM

437 \$3000 Open Jpr 1.40m, II, 2.b
422 \$1,500 Open Jpr 1.30m, II, 2.b
433 \$1,000 Open Jpr 1.20m, II, 2.b

2020 OLD SALEM FARM FALL HORSE SHOW WEEK 1

FRIDAY

Htr Ring 8:30 AM		Sand Ring 8:00 AM		Grand Prix Field 9:00 AM	
313	Ariat Adult Medal	453	\$1,000 5-6 YO Young Jumper 1.20m II, 2b	513	\$25,000 Grand Prix of North Salem II, 2a National Standard
13	Open	461	\$1,000 Open Jpr 1.20m, II, 2.b		
27	Adult Am Htr 18-35	406	\$1000 Jr/Am Jpr Low 1.20m, II, 2.b	425	\$3,000 Open Jpr 1.35m, II, 2.b
28	Adult Am Htr 18-35*	443	\$500 Ch/Adult Jpr 1.10m, II, 2.b	448	\$1,500 Open Jpr 1.30m, II, 2.b
26	Adult Am Htr 18-35 U/S	441	Ch/Adult Am Jpr 1.0m, II, 2.b	426	\$1,500 Jr/Am Med/High 1.30m/1.35m, II, 2b
30	Adult Am Htr 36-45	442	Ch/Adult Am Jpr 1.0m, II, 2.b		
31	Adult Am Htr 36-45*	446	OSF Ch/Adult Jumper .85m II, 2b		
29	Adult Am Htr 36-45 U/S	447	OSF Ch/Adult Jumper .85m II, 2b		
33	Adult Am Htr 46+*	303	Platinum Performance Talent Search 2*		
34	Adult Am Htr 46+	316	USHJA 3'3" Equititation		
32	Adult Am Htr 46+ U/S				
503	\$500 M&S Adult Classic				
302	NHSAA ASPCA Maclay				
301	USEF Hunter Seat Medal				
6	Schooling Pony (L-M-S)				
300	PHA				
7	Schooling Pony (L-M-S)				
310	M&S US Pony Medal				
312	WIHS Pony Medal				

SATURDAY

Htr Ring 8:00 AM		Sand Ring 8:00 AM		Grand Prix Field 9:00 AM	
14	Open	600	\$5,000 USHJA National Htr Derby	444	\$500 Ch/Adult Jpr 1.10m, II, 2.1
224	Large Pony Htr	510	OSF Equitation Challenge	424	\$1000 Jr/Am Jpr Low 1.20m, II, 2.1
225	Large Pony Htr Handy	305	WIHS Equit Htr Phase	427	\$1,500 Jr/Am Med/High 1.30m/1.35m, II, 2.1
226	Large Pony Htr	15	Open		
223	Large Pony Htr U/S	170	Junior 15&U Hunter		
220	Med Pony Htr	171	Junior 15&U Handy Hunter		
221	Med Pony Htr Handy	172	Junior 15&U Hunter		
222	Med Pony Htr	169	Junior 15&U Hunter U/S		
219	Med Pony Htr U/S	175	Junior 16-17 Hunter		
215	Sm Pony Htr	176	Junior 16-17 Handy Hunter		
216	Sm Pony Htr Handy	177	Junior 16-17 Hunter		
217	Sm Pony Htr	174	Junior 16-17 Hunter U/S		
214	Sm Pony Htr U/S	180	Junior Htr 3'3"		
500	Pony Hunter Classic	181	Junior Htr 3'3" Handy Hunter		
201	Sm/Med Green Pony Htr	182	Junior Htr 3'3"		
202	Sm/Med Green Pony Htr	179	Junior Htr 3'3" U/S		
203	Sm/Med Green Pony Htr	315	USHJA Hamel 3'3" Medal		
200	Sm/Med Green Pony Htr U/S	308	M&S Junior Medal		
205	Large Grn Pony Htr	160	Am/Own Htr 3'3"		
206	Large Grn Pony Htr	161	Am/Own Htr 3'3" Handy		
207	Large Grn Pony Htr	162	Am/Own Htr 3'3"		
204	Large Grn Pony Htr U/S	159	Am/Own Htr 3'3" U/S		
348	Pre Child Adult 2'2'6"	165	Am/Own Htr 3'6"		
349	Pre Child Adult 2'2'6"	166	Am/Own Htr 3'6" Handy		
347	Pre Child Adult 2'2'6" U/S	167	Am/Own Htr 3'6"		
		164	Am/Own Htr 3'6" U/S		

SUNDAY

Htr Ring 8:00 AM		Sand Ring 8:00 AM		Grand Prix Field 8:00 AM	
16	Open Hunter	309	Open Equitation 15-17 Flat	504	\$2,500 M & S Ch/Ad Classic 1.10m II, 2b
311	M&S Pony Medal	17	Open Hunter	519	\$5,000 Jr/AM Jpr Low Classic 1.25m II, 2b
42	Children's Htr Pony Sm/Med	51	Children's Htr Horse 15-17	520	\$7,500 Jr/AM Classic 1.35m/1.40m II, 2b
43	Children's Htr Pony Sm/Med	52	Children's Htr Horse 15-17*		
41	Children's Htr Pony Sm/Md U/S	50	Children's Htr Horse 15-17 U/S	1	Leadline
45	Children's Htr Pony Lrg	501	M&S 15-17 Children's Htr Classic		
46	Children's Htr Pony Lrg	306	Back On Track	800	2:30 PM \$75,000 OSF Grand Prix
44	Children's Htr Pony Lrg U/S	307	Open Equitation 12-14 Flat		Grand Prix National Standard, II, 2a
507	M&S Child Pony Classic	314	THIS Medal		
190	Mini Stirrup W-T Pleasure	48	Children's Htr Horse 14&U		
191	Mini Stirrup W-T Hunter	49	Children's Htr Horse 14&U*		
192	Mini Stirrup W-T Equitation	47	Children's Htr Horse 14&U U/S		
193	Short/Long Stirrup W-T	506	M&S 14 & U Children's Htr Classic		
194	Short/Long Stirrup W-T-C	322	Modified Ch/Adult Hunter		
195	Short/Long Stirrup Cross Rails	323	Modified Ch/Adult Hunter		
196	Short/Long Stirrup Cross Rails	321	Modified Ch/Adult Hunter U/S		
197	Short/Long Stirrup Hunter				
198	Short/Long Stirrup Hunter				

2020 OLD SALEM FARM FALL HORSE SHOW WEEK 2

TUESDAY

Htr Ring 8:00 AM

Ticketed Warm Up

Sand Ring 8:00 AM

Ticketed Warm Up

Grand Prix Field 10:00 AM

400 Schooling Jpr 1.0m, II
401 Schooling Jpr 1.10m, II

WEDNESDAY

Htr Ring 8:00 AM

Sand Ring 8:00 AM

380 Training Jumper .75m
381 Training Jumper .75m
384 Training Jumper .85m
385 Training Jumper .85m
388 Training Jumper .95m
389 Training Jumper .95m
392 Training Jumper 1.0m
393 Training Jumper 1.0m
396 Training Jumper 1.10m
397 Training Jumper 1.10m
440 \$250 Ch/Adult Am Jpr 1.0m, II,2.b
445 OSF Ch/Adult Jumper .85m

Grand Prix Field 11:00 AM

428 \$500 Open 1.10m II, 2b
418 \$750 Open 1.20m II, 2b
421 \$1,000 Open 1.30m II, 2b

THURSDAY

Htr Ring 8:00 AM

376 USHJA 2'6" Hunter
377 USHJA 2'6" Hunter
375 USHJA 2'6" Hunter U/S
366 USHJA 2'9" Hunter
367 USHJA 2'9" Hunter
365 USHJA 2'9" Hunter U/S
371 USHJA 3' Hunter
372 USHJA 3' Hunter
370 USHJA 3' Hunter U/S
351 OSF 3' Hunter
352 OSF 3' Hunter
350 OSF 3' Hunter U/S
356 Baby Green Hunter 2'6"
357 Baby Green Hunter 2'6"
355 Baby Green Hunter 2'6" U/S
361 OSF 2'6" Hunter
362 OSF 2'6" Hunter
360 OSF 2'6" Hunter U/S

Sand Ring 8:00 AM

382 Training Jumper .75m
386 Training Jumper .85m
390 Training Jumper .95m
394 Training Jumper 1.0m
398 Training Jumper 1.10m
407 \$750 Jr/Am Jpr Low 1.20m, II,2.b
444 \$500 Ch/Adult Jpr 1.10m, II,2.b
441 \$250 Ch/Adult Am Jpr 1.0m, II,2.1
442 \$250 Ch/Adult Am Jpr 1.0m, II,2.b
447 OSF Ch/Adult Jumper .85m II, 2b
446 OSF Ch/Adult Jumper .85m II, 2.1
303 Platinum Performance Talent Search

Grand Prix Field 9:00 AM

430 \$500 Open 1.10m II, 2b
419 \$750 Open 1.20m II, 2b
422 \$1,000 Open 1.30m II, 2b

2020 OLD SALEM FARM FALL HORSE SHOW WEEK 2

FRIDAY

Htr Ring 8:00 AM		Sand Ring 8:00 AM		Grand Prix Field 9:00 AM	
313	Ariat Adult Medal	13	Open	431	\$500 Open 1.10m II, 2.1
12	Open	300	PHA Medal	420	\$750 Open 1.20m II, 2.1
27	Adult Am Htr 18-35	305	WIHS Equit Htr Phase	423	\$1,000 Open 1.30m II, 2.1
28	Adult Am Htr 18-35*	170	Junior 15&U Hunter	406	\$750 Jr/Am Jpr Low 1.20m, II, 2.1
26	Adult Am Htr 18-35 U/S	171	Junior 15&U Handy Hunter	443	\$500 Ch/Adult Jpr 1.10m, II, 2.1
30	Adult Am Htr 36-49	172	Junior 15&U Hunter Stake	449	\$250 Ch/Adult Am Jpr 1.0m, II, 2.1b
31	Adult Am Htr 36-49*	169	Junior 15&U Hunter U/S		
29	Adult Am Htr 36-49 U/S	175	Junior 16-17 Hunter		
33	Adult Am Htr 50+*	176	Junior 16-17 Handy Hunter		
34	Adult Am Htr 50+	177	Junior 16-17 Hunter Stake		
32	Adult Am Htr 50+ U/S	174	Junior 16-17 Hunter U/S		
503	\$500 M&S Adult Classic	180	Junior Htr 3'3"		
302	NHSAA ASPCA Maclay	181	Junior Htr 3'3" Handy Hunter		
301	USEF Hunter Seat Medal	182	Junior Htr 3'3" Stake		
62	Open Equitation 15-17 Flat	179	Junior Htr 3'3" U/S		
63	Open Equitation 15-17 OF	315	USHJA Hamel 3'3" Medal		
64	Open Equitation 15-17 OF	308	M&S Junior Medal		
		160	Am/Own Htr 3'3"		
		161	Am/Own Htr 3'3" Handy		
		162	Am/Own Htr 3'3" Stake		
		159	Am/Own Htr 3'3" U/S		
		165	Am/Own Htr 3'6"		
		166	Am/Own Htr 3'6" Handy		
		167	Am/Own Htr 3'6" Stake		
		164	Am/Own Htr 3'6" U/S		

SATURDAY

Htr Ring 8:00 AM		Sand Ring 10:00 AM		Grand Prix Field 9:00 AM	
	ASPCA MaClay Regionals	16	Open Hunter	504	\$1500 M & S Ch/Ad Classic 1.10m II, 2b
13	Open	51	Children's Htr Horse 15-17	519	\$2500 Jr/AM Jpr Low Classic 1.25m II, 2b
224	Large Pony Htr	52	Children's Htr Horse 15-17*		
225	Large Pony Htr Handy	50	Children's Htr Horse 15-17 U/S		
226	Large Pony Htr	501	M&S 15-17 Children's Htr Classic		1 Leadline
223	Large Pony Htr U/S	306	Back On Track	700	\$10,000 OSF Jumper Classic 1.35m
220	Med Pony Htr	307	Open Equitation 12-14 Flat		
221	Med Pony Htr Handy	314	THIS Medal		
222	Med Pony Htr	48	Children's Htr Horse 14&U		
219	Med Pony Htr U/S	49	Children's Htr Horse 14&U*		
215	Sm Pony Htr	47	Children's Htr Horse 14&U U/S		
216	Sm Pony Htr Handy	506	M&S 14 & U Children's Htr Classic		
217	Sm Pony Htr	322	Modified Ch/Adult Hunter		
214	Sm Pony Htr U/S	323	Modified Ch/Adult Hunter		
500	Pony Hunter Classic	321	Modified Ch/Adult Hunter U/S		
201	Sm/Med Green Pony Htr				
202	Sm/Med Green Pony Htr				
203	Sm/Med Green Pony Htr				
200	Sm/Med Green Pony Htr U/S				
205	Large Grn Pony Htr				
206	Large Grn Pony Htr				
207	Large Grn Pony Htr				
204	Large Grn Pony Htr U/S				

ANNEX 9:00 AM

15	Open Hunter
348	Pre Child Adult 2'/2'6"
349	Pre Child Adult 2'/2'6"
347	Pre Child Adult 2'/2'6" U/S
311	M&S Pony Medal
42	Children's Htr Pony Sm/Med
43	Children's Htr Pony Sm/Med
41	Children's Htr Pony Sm/Md U/S
45	Children's Htr Pony Lrg
46	Children's Htr Pony Lrg
44	Children's Htr Pony Lrg U/S
507	M&S Child Pony Classic
190	Mini Stirrup W-T Pleasure
191	Mini Stirrup W-T Hunter
192	Mini Stirrup W-T Equitation
193	Short/Long Stirrup W-T
194	Short/Long Stirrup W-T-C
195	Short/Long Stirrup Cross Rails
196	Short/Long Stirrup Cross Rails
197	Short/Long Stirrup Hunter
198	Short/Long Stirrup Hunter

2020 OLD SALEM FARM FALL HORSE SHOW WEEK 3

WEDNESDAY

Htr Ring 8:00 AM

Ticketed Warm Up

Sand Ring 8:00 AM

Ticketed Warm Up

Grand Prix Field 10:00 AM

400 Schooling Jpr 1.0m, II
401 Schooling Jpr 1.10m, II

THURSDAY

Htr Ring 8:00 AM

11 Open Hunter
123 High Perf Work Htr
124 High Perf Work Htr
128 Green Wkg Htr 3'9"
129 Green Wkg Htr 3'9"
133 Green Wkg Htr 3'6"
134 Green Wkg Htr 3'6"
135 Green Wkg Htr 3'6" Incentive Round
139 Green Wkg Htr 3'3"
140 Green Wkg Htr 3'3"
144 Green Wkg Htr 3'
145 Green Wkg Htr 3'
146 Green Wkg Htr Incentive Round
150 3'3" Perf Wkg Htr
151 3'3" Perf Wkg Htr
155 3'6" Perf Wkg Htr
156 3'6" Perf Wkg Htr
351 OSF 3' Hunter
352 OSF 3' Hunter
356 Baby Green Hunter 2'6"
357 Baby Green Hunter 2'6"
361 OSF 2'6" Hunter
362 OSF 2'6" Hunter
366 USHJA 2'9" Hunter
367 USHJA 2'9" Hunter
371 USHJA 3' Hunter
372 USHJA 3' Hunter

Sand Ring 8:00 AM

380 Training Jumper .75m
381 Training Jumper .75m
384 Training Jumper .85m
385 Training Jumper .85m
388 Training Jumper .95m
389 Training Jumper .95m
392 Training Jumper 1.0m
393 Training Jumper 1.0m
396 Training Jumper 1.10m
397 Training Jumper 1.10m
440 \$250 Ch/Adult Am Jpr 1.0m, II,2.b
445 OSF Ch/Adult Jumper .85m

Grand Prix Field 9:00 AM

431 \$500 Open 1.10m II, 2b
420 \$750 Open 1.20m II, 2b
423 \$1,000 Open 1.30m II, 2b

FRIDAY

Htr Ring 8:00 AM

122 High Perf Work Htr U/S
12 Open Hunter
125 High Perf Work Htr
126 High Perf Work Handy Htr
127 Green Wkg Htr 3'9" U/S
130 Green Wkg Htr 3'9"
131 Green Wkg Handy Htr 3'9"
132 Green Wkg Htr 3'6" U/S
136 Green Wkg Htr 3'6"
137 Green Wkg Handy Htr 3'6"
138 Green Wkg Htr 3'3" U/S
141 Green Wkg Htr 3'3"
142 Green Wkg Handy Htr 3'3"
143 Green Wkg Htr 3' U/S
147 Green Wkg Htr 3'
148 Green Wkg Handy Htr 3'
149 3'3" Perf Wkg Htr U/S
152 3'3" Perf Wkg Htr
153 3'3" Perf Wkg Handy Htr
154 3'6" Perf Wkg Htr U/S
157 3'6" Perf Wkg Htr
158 3'6" Perf Wkg Handy Htr
350 OSF 3' Hunter U/S
353 OSF 3' Hunter
354 OSF 3' Hunter
355 Baby Green Hunter 2'6" U/S
360 OSF 2'6" Hunter U/S
358 Baby Green Hunter 2'6"
359 Baby Green Hunter 2'6"
363 OSF 2'6" Hunter
364 OSF 2'6" Hunter
365 USHJA 2'9" Hunter U/S
368 USHJA 2'9" Hunter
369 USHJA 2'9" Hunter
370 USHJA 3' Hunter U/S
373 USHJA 3' Hunter
374 USHJA 3' Hunter

Sand Ring 8:00 AM

382 Training Jumper .75m
386 Training Jumper .85m
390 Training Jumper .95m
394 Training Jumper 1.0m
398 Training Jumper 1.10m
441 \$250 Ch/Adult Am Jpr 1.0m, II,2.1
442 \$250 Ch/Adult Am Jpr 1.0m, II,2.b
446 OSF Ch/Adult Jumper .85m II, 2b
447 OSF Ch/Adult Jumper .85m II, 2.1
303 Platinum Performance Talent Search

Grand Prix Field 9:00 AM

432 \$500 Open 1.10m II, 2b
433 \$750 Open 1.20m II, 2b
434 \$1,000 Open 1.30m II, 2b
406 \$750 Jr/Am Jpr Low 1.20m, II,2.b
448 \$500 Ch/Adult Jpr 1.10m, II,2.b

2020 OLD SALEM FARM FALL HORSE SHOW WEEK 3

SATURDAY

Htr Ring 8:00 AM		Sand Ring 8:00 AM		Grand Prix Field 9:00 AM	
13	Open	14	Open	424	\$750 Jr/Am Jpr Low 1.20m, II,2.1
24	Low Hunter 2'6"	160	Am/Own Htr 3'3"	519	\$2500 Jr/AM Jpr Low Classic 1.25m II, 2b
25	Low Hunter 2'6"	161	Am/Own Htr 3'3"	444	\$500 Ch/Adult Jpr 1.10m, II,2.1
23	Low Hunter 2'6" U/S	165	Am/Own Htr 3'6"	504	\$1500 M & S Ch/Ad Classic 1.10m II, 2b
27	Adult Am Htr 18-35	166	Am/Own Htr 3'6"	435	\$250 Ch/Adult Am Jpr 1.0m, II,2.1
28	Adult Am Htr 18-35*	170	Junior 15&U Hunter	436	\$500 Ch/Adult Jpr Classic 1.0m, II,2.b
26	Adult Am Htr 18-35 U/S	171	Junior 15&U Hunter		
30	Adult Am Htr 36-49	175	Junior 16-17 Hunter		1 Leadline
31	Adult Am Htr 36-49*	176	Junior 16-17 Hunter	700	\$10,000 OSF Jumper Classic 1.35m
29	Adult Am Htr 36-49 U/S	180	Junior Htr 3'3"		
33	Adult Am Htr 50+*	181	Junior Htr 3'3"		
34	Adult Am Htr 50+	580	Junior Hunter Classic		
32	Adult Am Htr 50+ U/S	309	Open Equitation 15-17 Flat		
503	\$500 M&S Adult Classic	317	Open Equitation 15-17 OF		
313	Ariat Adult Medal	306	Back On Track Medal		
322	Modified Ch/Adult Hunter	314	THIS Medal		
323	Modified Ch/Adult Hunter	51	Children's Htr Horse 15-17		
321	Modified Ch/Adult Hunter U/S	52	Children's Htr Horse 15-17*		
325	Modified Ch/Adult Equitation	50	Children's Htr Horse 15-17 U/S		
326	Modified Ch/Adult Equitation	48	Children's Htr Horse 14&U		
324	Modified Ch/Adult Equitation Flat	49	Children's Htr Horse 14&U*		
		47	Children's Htr Horse 14&U U/S		
		506	M&S Children's Htr Classic		
		612	Bit Of Straw Hunter Classic		

SUNDAY

Htr Ring 8:00 AM		Sand Ring 8:00 AM		Grand Prix Field 8:00 AM	
310	USEF Pony Medal	300	PHA Medal	600	\$5,000 OSF Hunter Derby
15	Open	302	NHSAA ASPCA Maclay	601	\$1,000 OSF Child/Adult Hunter Derby
224	Large Pony Htr	301	USEF Hunter Seat Medal	602	\$1,500 USHJA Pony Hunter Derby
225	Large Pony Htr Handy	169	Junior 15&U Hunter U/S		
226	Large Pony Htr	16	Open		
223	Large Pony Htr U/S	172	Junior 15&U Hunter		
220	Med Pony Htr	173	Junior 15&U Handy Hunter		
221	Med Pony Htr Handy	174	Junior 16-17 Hunter U/S		
222	Med Pony Htr	177	Junior 16-17 Hunter		
219	Med Pony Htr U/S	178	Junior 16-17 Handy Hunter		
215	Sm Pony Htr	179	Junior Htr 3'3" U/S		
216	Sm Pony Htr Handy	182	Junior Htr 3'3"		
217	Sm Pony Htr	183	Junior Htr 3'3" Handy Hunter		
214	Sm Pony Htr U/S	315	USHJA 3'3" Medal		
500	USEF Pony Hunter Classic	308	M&S Junior Medal		
201	Sm/Med Green Pony Htr	159	Am/Own Htr 3'3" U/S		
202	Sm/Med Green Pony Htr	162	Am/Own Htr 3'3"		
203	Sm/Med Green Pony Htr	163	Am/Own Htr 3'3" Handy		
200	Sm/Med Green Pony Htr U/S	164	Am/Own Htr 3'6" U/S		
205	Large Grn Pony Htr	167	Am/Own Htr 3'6"		
206	Large Grn Pony Htr	168	Am/Own Htr 3'6" Handy		
207	Large Grn Pony Htr				
204	Large Grn Pony Htr U/S				
348	Pre Child Adult 2'2'6"				
349	Pre Child Adult 2'2'6"				
347	Pre Child Adult 2'2'6" U/S				

ANNEX 8:00 AM

190	Mini Stirrup W-T Pleasure
17	Open Hunter
191	Mini Stirrup W-T Hunter
192	Mini Stirrup W-T Equitation
193	Short/Long Stirrup W-T
194	Short/Long Stirrup W-T-C
195	Short/Long Stirrup Cross Rails
196	Short/Long Stirrup Cross Rails
197	Short/Long Stirrup Hunter
198	Short/Long Stirrup Hunter
311	M&S Pony Medal
42	Children's Htr Pony Sm/Med
43	Children's Htr Pony Sm/Med
41	Children's Htr Pony Sm/Md U/S
45	Children's Htr Pony Lrg
46	Children's Htr Pony Lrg
44	Children's Htr Pony Lrg U/S
507	M&S Child Pony Classic

horseflight.com

Excellence in International Horse Shipping



WEEKLY FLIGHTS TO AND FROM EUROPE | AND THE REST OF THE WORLD.

.....

office +1 (844) 832-5848
fax +1 (866) 467-6704
www.horseflight.com

237 Old Turnpike Road
Califon, NJ 07830



Transporting the
competitive horse world one flight at a time.

Old Salem Farm

2020 COVID-19

Protocols and Action Plan for Competitions

Old Salem Farm's 120-acre equestrian facility provides adequate space to properly mitigate risks associated with COVID-19. With 4 outdoor competition arenas and 4 outdoor dedicated schooling areas Old Salem Farm (OSF) can comply with all applicable federal, state, local and USEF regulations as well as WHO recommendations and CDC guidelines.

The following protocols and actions will apply to all upcoming events until further notice. OSF will update these procedures as necessary to observe all Recommended Best Practices by USEF for mitigating risks related to the COVID-19 virus.

Access

- Temperature will be checked each time you enter the property. All necessary waivers and statements of health must be signed at entrance at which time you will be issued a wristband. Wristband must be worn throughout the week of competition. Without it you will need to redo all necessary paperwork. If you are participating multiple weeks, you must bring the wristband from the previous week to receive new wristband.
- Any person with known or suspected symptoms of COVID-19 or who has been exposed to a person with symptoms of COVID-19 (cough, shortness of breath, or fever) should follow self-quarantine protocols and not come to any events.
- All competition staff, officials and service providers will be required to monitor their temperature daily before entering the competition grounds. Anyone with a temperature above 99.5 F (37.5 C) will be asked to quarantine and report findings to Management immediately to avoid an incident of possible exposure to others.
- Until further notice the shows should only be attended by Trainers, Riders, Grooms, Owners, Competition Staff, and parents attending as a minor's guardian. Spectators and extended family or friends will NOT be allowed access.
- Everyone entering the show grounds will be required to wear a face mask when not mounted on a horse as well as stay 6 feet apart from each other.
- The main barn will be closed to all exhibitors and horse show staff. Portable bathrooms will be on site for your convenience and sanitized frequently.
- Please do not gather in large groups. The grounds will be monitored and if necessary, you will be asked to leave if not following proper social distancing protocols.

Show Office / Agreements

- There will be no admittance to the horse show office.
- Entries are due 3 days prior to show.
- All entries, adds, scratches, feed & bedding orders and invoicing must be done online. Entries must be accompanied by a credit card number.
- All participants, including licensed officials and volunteers, need to provide emergency contact information and execute an updated Waiver and Release of Liability, Assumption and Risk of Indemnity Agreement required by USEF, as a condition of participation. No entries will be accepted or processed without an entry blank and a signed form.

Old Salem Farm

Signage

- Signs will be posted at the entrance and throughout the grounds that will display all applicable federal, state, and local regulation, including WHO and CDC guidelines as they relate to COVID-19.

Social Distancing/Participation Protocols

- Temperature will be checked each time you enter the property. All necessary waivers and statements of health must be signed at entrance at which time you will be issued a wristband. Wristband must be worn throughout the week of competition. Without it you will need to redo all necessary paperwork. If you are participating multiple weeks, you must bring the wristband from the previous week to receive new wristband.
- Participants must comply with all social distancing requirements including frequent handwashing throughout the day as well as using hand sanitizer when handwashing is not available. Hand Sanitizer will be available around the property for everyone's convenience.
- Gloves and masks should be worn by grooms, trainers and riders when handing off horses to each other.
- Masks MUST be worn when not mounted on a horse. Everyone on the show grounds must always keep a distance of at least 6 feet apart.
- There will be no VIP or social gatherings on the show grounds. Gatherings of any size will be not be permitted. Please do not crowd the ingates.
- Announcements will be made throughout the day regarding social distancing and wearing of masks.

Stabling

- Stabling will be available. We ask that you frequently sanitize the area and leave enough space to properly social distance from others.

Competition / Schooling Rings

- No horses will be allowed in the ring until it is time for their division. There will be announcements (verbal and online) when to come to the ring. Approximate times for schooling breaks will be published online and announced.
- Our show schedule will be condensed into as short a time frame as possible to minimize time spent on the competition grounds. Division times will be available on our website with "blocked times". This will allow people to arrive, show and go home within a shorter timeframe.
- Each show ring will have a dedicated schooling area. We ask that people be considerate to others that when setting jumps you wear gloves and to wipe or spray down (spray will be provided by OSF) schooling jumps after use.
- We will be frequently updating information online regarding schedules and time updates throughout the day. Check our website and social media.
- Ribbons/Awards will not be handed out at the ring. There will be a designated area where you may pick up your ribbons and awards. Please do not crowd the area

Old Salem Farm

Food Concession

- OSF will have a food vendor on site for outdoor order and pick up only. Please go online to see menu choices. Proper protocol will be followed at all times regarding social distancing and disinfecting of common areas.
- Water will be provided at the ingates.

Parking

- There will be a parking attendant to assist with parking trailers and to monitor attendees to insure proper social distance protocols are being followed. We ask that when you have completed showing that you leave in a timely fashion.

Emergency Response Plan

- There will be an EMT on staff at all shows.
- Should an occurrence related to a COVID-19 incident or outbreak we will immediately call local medical resources and isolate any individuals with symptoms until local 911 authorities evaluate and act on the situation.
- All staff and participants as well as service providers and vendors will be notified immediately via email, text and announcements.
- All protocols will be available on our website as well as distributed to all personnel.
-

Revised 8/12/20

RULES AND REGULATIONS

Every class offered herein which is covered by the rules and specifications of the current usef rule book will be conducted and judged in accordance therewith. All measurement cards, amateur cards, necessary association numbers and signatures must appear on all entry blanks, accompanied by a form of payment, before any entry will be processed and rider number given out.

1. Entries close **August 31, for the Old Salem Farm Horse Shows. All entries received after August 31, 2020 will be considered late and be charged \$100.00 per late entry.** . No phone entries will be accepted. **No faxed entries will be accepted.** Office and stall fees must be paid by the closing date of entries with a signed check in the amount of the stalls and office fee to secure stalls. In addition, an open check must also be included for entries and remaining fees. Credit Cards accepted Visa, MasterCard and American Express. Credit card payments will be charged a three percent convenience fee. For prize list and horse show information from 9:00 AM-5:00 PM: Phone (914) 669-5610.

2. A Ship-In fee of \$50.00 will be assessed to those entries who are showing but not purchasing a stall. This is a one-time fee.

3. **Temporary stabling available: Stalls \$275, which must be paid in full by the closing date of entries. Stalls are under tents and are vinyl type with doors. No initial bedding provided. Stabling is limited, so Management reserves the right to limit the number of tack and/or grooming stalls assigned. Due to strict fire regulations, NO EXTENSION CORDS ALLOWED! No refunds on stalls after the closing date of entries. NYS Sales tax will be charged where applicable.**

4. USEF IHP Fees: All Riders competing in any FEI sanctioned class are subject to USEF International High Performance rule see USEF GR 207 for fees due to the Federation and will be paid as part of the total FEI fee.

5. Stable & Schooling: Early arrivals prior to September 6, 2020 12:00 noon, must contact Stable Manager to make check in arrangements.

6. Scratches: A horse scratched prior to closing of entries will receive a full refund.

Hunter and Equitation Horses: Once past the closing date of entries, horses may be scratched by written notice to the Show Secretary one hour prior to the start of the section being scratched. Once the show has started, horses which are not shown in classes in which they are entered will forfeit their entry fees. Once a horse has shown, in order to qualify for a refund of individual "Per Class" entries, a scratch sheet must be filled out and presented to the Show Secretary accompanied by a certificate signed by the Show Veterinarian. Once a horse has shown in any one class of a division which requires a "Division Only" entry, division fees will not be refunded. When this process is complete, the class entry fee will be refunded or credited less a \$95.00 office fee. Nominated jumpers: Once past the closing date of entries, horses may be scratched by written notice to the Show Secretary one hour prior to the classes being scratched. Nomination fee and class entry fee will be refunded or credited less a \$95.00 office fee. No refunds on stalls after the closing date of entries.

7. Ring dimensions and footing: Hedge Ring 140' x 250', June Road Ring 150' x 250', Indoor Ring 114' x 195'; Footing in all rings and schooling areas is drainage mats, sand and fibermix. Grand Prix Field 350' x 450', footing bluegrass mix turf.

8. Poling & Animal Welfare: Manual poling and/or the use of bamboo pole offsets are prohibited. Any rider or trainer found poling or using offsets and/or who, in the opinion of the judges or committee, uses their whip or spurs in an excessive manner will be immediately eliminated from the class where the incident occurred, be suspended from further showing for a twenty-four hour period and will forfeit all entry fees for that class. Any horse upon which a violation of the manual poling and/or use of bamboo offset rule is perpetrated will be suspended from competition for a twenty-four hour period starting from the time of incident and forfeit all entry fees. Further violations by that exhibitor on the same horse or another horse will result in said exhibitor being barred from any further competition at this Show.

All incidents will be reported by USEF Stewards to the USEF for possible further investigations.

9. Formal attire for Hunter classes: scarlet, black or dark blue coat; white shirt with white stock, tie, or choker; white, buff, or canary breeches; hunt cap, derby or hunting silk hat. Formal attire for Jumper classes: scarlet, black, dark blue or dark green coat; white shirt with white stock, tie or choker; white, fawn or canary breeches; hunt cap; black or brown boots. Hard hats must be worn at all times while riding and juniors must wear protective headgear in accordance with USEF Rules.

10. Prize money will be mailed in the form of a check, **made payable to the owner or other designee listed on the entry blank**, no later than 30 days after the last show day. A U. S. Social Security or Federal ID number is required before any prize money will be paid. Checks void after 60 days and the Horse Show will not stop payment or duplicate awards for any lost check.

11. A fine of \$100.00 plus collection fees, will be assessed for all non-negotiable checks. Foreign competitors are required to pay in US funds to avoid discount charges.

12. The Management reserves the right to cancel, combine or split any class if entries warrant or the rules of the USEF require it. The Management also reserves the right to: limit the number of entries accepted, which will be done on a first come, first serve basis; change the location of any classes and to alter courses and/or fences if necessary; to decline any entry before the start of the show without being liable for compensation; change the start times of any ring from what is indicated on time schedule.

13. The Management reserves the right to restrict the area of the courtesy circle by Mandatory Line which will be indicated on course diagrams and posted at least one hour before the class is to begin. Jumping orders will be established in accordance with USEF JP112 where the horses names will be drawn individually starting with the first position then working down. Riders who have conflicts should see the Starters so that necessary adjustments can be made.

14. Parking provided on the Show grounds only in areas designated by Management. Campers, motor homes and trailers cannot be accommodated on the Show grounds. Except for "day-trippers", horse trailers, vans, etc. will be allowed on the grounds only for loading and unloading.

15. No Dogs or other pets allowed on the grounds unless they are leashed and under control. Unrestrained pets will be impounded and released only upon payment of a \$100.00 fine.

16. **Equine Health Requirements/Protocols: All horses (competing or not) that enter the grounds must have available for inspection: Negative Coggins within one year (required) and a statement of health signed and dated by a licensed veterinarian within 7 days of arrival of Old Salem Farm Show Grounds. The statement of health must show the horse/pony has been enrolled in a regular and consistent program of vaccination against EHV-1 with the most recent booster being within 180 days. The statement of health must state that the horse/pony have not shown symptoms of or been treated for EHV-1 in the past 28 days nor has been exposed to any horse/pony being treated for or show symptoms of EHV-1. Horses traveling**

from other than New York State require a certificate of health. Every animal entered for competition or on the show grounds, shall be under the control of the Horse Show Management. Old Salem Farm, its owners, employees, agents, show committee and sponsors shall not be liable or responsible for any loss or damage to any animal, person or property, which may occur for any reason during the show and it shall be a condition of entry that each exhibitor hold Old Salem Farm, its owners, agents, employees and the USEF blameless for any accident or loss which may occur by fire or otherwise.

17. Should any question or dispute arise not provided for in these rules, the decision of the Horse Show Management shall be final and adhered to by the agreement of a signed entry blank.

18. All exhibitors in the Pony and Junior Hunter divisions must present their measurement cards at the office before numbers are released. All Pony or Junior Hunters who do not possess a current measurement card will be measured at a time and place to be announced. PLEASE INCLUDE COPIES OF MEASUREMENT CARDS WITH ENTRIES TO FACILITATE PROCESSING.

19. Federation Entry agreement By entering a Federation-licensed Competition and signing this entry blank as the Owner, Lessee, Trainer, Manager, Agent, Coach, Driver, Rider, Handler, Vaultor or Longeur and on behalf of myself and my principals, representatives, employees and agents, I agree that I am subject to the Bylaws and Rules of The United States Equestrian Federation, Inc. (the "Federation") and the local rules of Old Salem Farm (Competition). I agree to be bound by the Bylaws and Rules of the Federation and of the competition. I will accept as final the decision of the Hearing Committee on any question arising under the Rules, and agree to release and hold harmless the competition, the Federation, their officials, directors and employees for any action taken under the Rules. I represent that I am eligible to enter and/or participate under the Rules, and every horse I am entering is eligible as entered. I also agree that as a condition of and in consideration of acceptance of entry, the Federation and/or the Competition may use or assign photographs, videos, audios, cable-casts, broadcasts, internet, film, new media or other likenesses of me and my horse taken during the course of the competition for the promotion, coverage or benefit of the competition, sport, or the Federation. Those likenesses shall not be used to advertise a product and they may not be used in such a way as to jeopardize amateur status. I hereby expressly and irrevocably waive and release any rights in connection with such use, including any claim to compensation, invasion of privacy, right of publicity, or to misappropriation. The construction and application of Federation rules are governed by the laws of the State of New York, and any action instituted against the Federation must be filed in New York State. See GR908.4

Life, senior active and junior active members shall be eligible to participate in all classes at Regular Competitions, Eventing Competitions at the Preliminary Level or above and Combined Driving Competitions at the Advanced Level, Dressage, Reining and Vaulting Competitions and Endurance Rides. A nonmember may participate as a handler, rider, driver, owner, lessee, agent, coach or trainer at Regular Competitions, Eventing Competitions, Dressage Competitions, Reining Competitions and Combined Driving Competitions upon payment of a \$45 Showpass registration fee. Participants in the following classes are exempted from the Requirements of this rule: 1) headline; 2) exhibitions; 3) games and races; 4) classes for 4-H members; 5) walk trot and academy classes (academy classes are classes limited to horses used regularly in a lesson program); 6) USDF introductory level tests, pas de deux and quadrille classes; 7) NRHA Endorsed Reining Competitions. 8) Opportunity classes, 9) citizens of other nations who have proof, in English, of current membership in good standing of their own National Federation, 10) USEA beginner novice division; and 11) assistant handlers in Dressage Sport Horse Breeding classes.

INFORMATION: tel 914-669-5610 or www.oldsalemfarm.net

FedEx / Shipping:

Old Salem Farm
190 June Road
North Salem, NY 10560

U.S. Postal

Old Salem Farm
P.O. Box 317
North Salem, NY 10560

DIRECTIONS: From New York Interstate 84 or 287, take Interstate 684 to Exit 8, Hardscrabble Road. Turn right at stop sign, travel east 3.1 miles to end; turn right.

ACCOMMODATIONS

Crowne Plaza: Danbury, CT	(203) 794-0600	Holiday Inn Mt. Kisco: Mt. Kisco, NY	(914) 241-2600
Ethan Allen Inn: Danbury, CT	(866) 538-0187	Spring Hill Suites by Marriot: Danbury, CT	(203) 744-7333
Heidi's Inn: Brewster, NY	(845) 279-8011	Residence Inn Marriot: Danbury, CT	(203) 797-1256
Hilton Gardens: Danbury, CT	(203) 205-2000	Hotel Zero Degrees, Danbury, CT	(203) 730-9200
Holiday Inn Express: Danbury, CT	(866) 538-1369		

Equitation

Entry Fee: \$50.00 Per Class

1. Leadline

Open to riders 7 years and under. Judged on manners, suitability and position at the walk.

- 300. PHA Medal
- 301. Dover Saddlery/USEF Hunter Seat Medal
- 302. NHSA ASPCA Maclay Horsemanship Class
- 303. Platinum Performance USEF Show Jumping Talent Search 2*
- 305. WIHS Equitation Hunter Phase
- 306. "Back on Track" Children's Medal - Fences 3' Tests 1-19.
- 307. 12-14 Equitation Flat - Tests 1-19.
- 308. Marshall & Sterling Junior Medal - Fences 3'6".
- 309. 15-17 Equitation Flat - Tests 1-19.
- 310. Marshall & Sterling USEF Pony Medal
- 311. Marshall & Sterling Children's Pony Medal
- 312. WIHS Pony Medal
- 313. Ariat Adult Medal FW-PHA
- 314. THIS National Children's Medal 3'
- 315. Hamel Foundation 3'3" Medal
- 316. USHJA 3'3" Jump Seat Medal
- 317. Open Equitation 15-17 over Fences
- 400. Old Salem Farm Equitation Challenge

Mini Walk Trot

Entry Fee: \$40.00 Per Class

- 190. Mini W T Pleasure
- 191. Mini W T Hunter
- 192. Mini W T Equitation

Short/Long Stirrup

Entry Fee: \$40.00 Per Class

- 193. Short/Long Stirrup Walk Trot
- 194. Short/Long Stirrup Walk Trot Canter
- 195. Short/Long Stirrup Cross Rails
- 196. Short/Long Stirrup Cross Rails
- 197. Short/Long Stirrup Hunter
- 198. Short/Long Stirrup Hunter

Pre Child/Adult Equitation

Open to Adult Amateur and Junior riders.

Entry Fee: \$40 Per Class Fences: 2'2"6"

- 347. Pre Child/Adult Equitation Flat
- 348. Pre Child/Adult Equitation
- 349. Pre Child/Adult Equitation

Modified Child/Adult Equitation

Open to Adult Amateur and Junior riders.

Entry Fee: \$40 Per Class Fences: 2'6"

- 324. Modified Child/Adult Equitation Flat
- 325. Modified Child/Adult Equitation
- 326. Modified Child/Adult Equitation

510. Old Salem Farm Equitation Challenge

Old Salem Farm Equitation Challenge
presented by Palm Beach International Academy

Entry Fee: \$100

Eligibility: This class is open to Juniors or Young Riders riders who are Amateurs under USEF or FEI rules. Class to be held over two rounds, with two different courses in the June Road competition ring. The top 12 riders from the first round compete in the second round. Exhibitor must show same horse in both rounds.

Course: First round to be held over a course of twelve to fourteen jumps. Combinations will be counted as one jump. The jumps will be 3'6" (1.08m) in height with a maximum spread of four feet (1.21m). Second round to be a shortened course.

Judging: Riders to be judged and awarded a numerical score. Top 12 riders to advance to second round. Scores from the first round will be brought forward. Final placings are determined by adding both rounds scores. In case of a tie, total faults and time will determine final placings.

Attire: In accordance with USEF EQ Tack: Class will be run in accordance with Equitation rules.

Awards:

Trophy and ribbons 1-12

600. \$5,000 USHJA National Hunter Derby Presented by Mane 'n Tail

Saturday, September 12, 2020

Membership and Participation Requirements (additional specifications @ USHJA.ORG)

- A. Riders, owners, and trainers must be current Active members of USEF and USHJA to participate in this class. (see GR202).
- B. Horses and ponies must be registered with USHJA to participate in this class.
- C. Exception: Foreign residents and horses and ponies in good standing with their National Federation are eligible to compete in this class but will not receive points unless they follow I.A. and I.B.
- D. USHJA Zone HOTY bonus points will only be awarded if the owner is a current Active member of USEF and USHJA and the horse is recorded with USEF and registered with USHJA.
- E. Money won will only count for any USHJA National Hunter Derby standings or awards if the rider, owner and trainer are current Active members of USEF and USHJA, and the horse is registered with USHJA.
- F. Competition management is required to run the class if there are twelve (12) or more entries. They may choose to run the class with fewer than twelve (12) entries.
- G. Competing in the USHJA National Hunter Derby does not qualify a horse or rider for the USHJA International Hunter Derby Championship.
- H. Horses entered in this class will NOT be required to jog for soundness. Any unsoundness during the competition will be reflected in the scores from the judges (GR 1033.6).
- I. In accordance with HU146.14 the same horse-and-rider combination must compete in both rounds of the National Hunter Derby.

Schooling: During the two rounds of the National Hunter Derby all horses must be ridden in official horse show schooling areas only. Riders must wear their official horse show back number while mounted.

A minimum of twelve (12) entries, including horses tied for 12th place, must return for Round Two, if available.

Attire: Formal dress attire is suggested but not required: Buff breeches and Shad belly. White breeches and dark or scarlet coat, hunt colors, or official sponsor or team jacket permitted.

This class will be run in accordance with all rules stated in HU189. You may log on to www.ushja.org for more information.

Round One: Hunter Classic Course

- a. A minimum of ten obstacles must be offered in the Hunter Classic Round.
- b. Fence heights 3'0"
- c. There must be four option fences set at 3'5".
- d. At least one In and Out
- e. At least one Bending Line
- f. At least one line with an unrelated distance
- g. At least one long approach
- h. Jumps:

Obstacles must simulate those reminiscent of the hunt field and course must offer a variety of Classic jumps with different appearances such as: natural post and rail, stone wall, white board fence or gate, coop, aiken, hedge, oxer, brush, logs, natural foliage. Natural obstacles such as banks and ditches are allowed.

Round Two: Handy Hunter Course

- a. A minimum of eight obstacles must be offered in the Handy Hunter Round.
- b. Fence height 3'0"
- c. There must be four option fences set at 3'5"

The course should simulate riding over hunt country and must have a minimum of two handy options, such as: tight turns, different tracks, clever options for jump approaches, pen type obstacles, hand gallop a jump, trot a lowered obstacle not to exceed 2'6" in height, walk over an obstacle not to exceed 18" in height, lead over an obstacle, halt and/or back, open gate while mounted.

Gimmicky options are not appropriate

Entry Fee: \$300.00 (plus \$25 USHJA fee)

Prize Money:

\$1,500, \$1,100, \$650, \$400, \$300, \$250, \$200, \$150, \$150, \$100, \$100, \$100





**Your Moment
to Shine...**

The Original
Mane 'n Tail®

www.ultimategloss.com



HUNTER DIVISIONS

Class Specifications: Hunter classes to be judged on soundness and performance. Any additional specifications will be noted.

Courses: Hunter courses may include: gates, brush, walls, oxers, in and out, coops, aiken, rails or any combination of the aforementioned.

Awards: Trophy and eight ribbons awarded in every class, unless otherwise specified.

Championships: Hunter Champions will be awarded to two of the four horses scoring the most points over fences.

High Performance Hunter

Week 1

Section Entry Fee \$200 Fences: 4'-4'6"

122. High Performance Hunter U/S
 123. High Performance Hunter
 124. High Performance Handy Hunter
 125. High Performance Hunter Stake
 Class 125 Stake: \$80 \$64 \$50 \$46 \$40 \$40

Week 3

Section Entry Fee: \$300.00 Fences: 4'-4'6"

Class Entry Fee: \$75.00

Classes 123-126: \$60 \$42 \$30 \$30 \$14 \$12

122. High Performance Hunter U/S
 123,124,125, High Performance Hunter
 126. High Performance Handy Hunter

Performance Hunter 3'6"

Week 1

Section Entry Fee: \$180.00 Fences: 3'6"

Class Entry Fee: \$45.00

154. Performance Hunter U/S
 155. Performance Hunter
 156. Performance Handy Hunter
 157. Performance Hunter Stake
 Class 157 Stake: \$30 \$22 \$15 \$13 \$10 \$10

Week 3

Section Entry Fee: \$275.00 Fences: 3'6"

Class Entry Fee: \$65.00

Classes 155-158: \$55 \$40 \$30 \$20 \$15 \$10

154. Performance Hunter U/S
 155,156,157. Performance Hunter
 158. Performance Handy Hunter

Performance Hunter 3'3"

Week 1

Section Entry Fee: \$180 Fences: 3'3"

Class Entry Fee: \$45.00

- Class 149. Performance Hunter 3'3" U/S
 Class 150. Performance Hunter 3'3"
 Class 151. Performance Handy Hunter 3'3"
 Class 152. Performance Hunter Stake
 Class 152 Stake: \$30 \$22 \$15 \$13 \$10 \$10

Week 3

Section Entry Fee: \$275.00 Fences: 3'3"

Class Entry Fee: \$65.00

Classes 150-153: \$55 \$40 \$30 \$20 \$15 \$10

- Class 149. Performance Hunter 3'3" U/S
 Class 150, 151, 152. Performance Hunter 3'3"
 Class 153. Performance Handy Hunter 3'3"

Green Hunter 3'9"

Week 1

Entry Fee: \$180 Fences: 3'9"

- Class 127. Green Hunter 3'9" U/S
 Class 128. Green Hunter 3'9"
 Class 129. Green Handy Hunter 3'9"
 Class 130. Green Hunter Stake 3'9"
 Class 130 Stake: \$30 \$22 \$15 \$13 \$10 \$10

Week 3

Entry Fee: \$250.00 Fences: 3'9"

Classes 128-131: \$40 \$30 \$25 \$15 \$10 \$10

- Class 127. Green Hunter 3'9" U/S
 Classes 128, 129, 130. Green Hunter 3'9"
 Class 131. Green Handy Hunter 3'9"

Green Hunter 3'6"

Week 1

Entry Fee: \$180 Fences: 3'6"

- Class 132. Green Hunter 3'6" U/S
 Class 133. Green Hunter 3'6"
 Class 134. Green Handy Hunter 3'6"
 Class 135. Green Hunter Stake
 Class 135 Stake: \$30 \$22 \$15 \$13 \$10 \$10

Week 3

Entry Fee: \$250.00 Fences: 3'6"

Classes 133-136: \$40 \$30 \$25 \$15 \$10 \$10

- Class 132. 'Green Hunter 3'6 U/S
 Classes 133, 134, 135 Green Hunter 3'6"
 Class 136. Green Handy Hunter 3'6"

Green Hunter 3'3"

Week 1

Entry Fee: \$180 Fences: 3'3"

- Class 138. Green Hunter 3'3" U/S
 Class 139. Green Hunter 3'3"
 Class 140. Green Handy Hunter 3'3"
 Class 141. Green Hunter 3'3" Stake
 Class 141 Stake: \$30 \$22 \$15 \$13 \$10 \$10

Week 3

Entry Fee: \$250.00 Fences: 3'3"

Classes 139- 142: \$40 \$30 \$25 \$15 \$10 \$10

- Class 138. Green Hunter 3'3" U/S
 Class 139, 140, 141 Green Hunter 3'3"
 Class 142. Green Handy Hunter 3'3"

HUNTER DIVISIONS (continued)

Green Hunter 3'

Week 1

Entry Fee: \$180 Fences: 3'

Class 143. Green Hunter 3' U/S

Class 144. Green Hunter 3'

Class 145. Green Handy Hunter 3'

Class 146. Green Hunter 3' Stake

Class 146 Stake: \$30 \$22 \$15 \$13 \$10 \$10

Week 3

Entry Fee: \$250.00 Fences: 3'

Classes 144- 147: \$40 \$30 \$25 \$15 \$10 \$10

Class 143 Green Hunter 3' U/S

Classes 144, 145, 146 Green Hunter 3'

Class 147. Green Handy Hunter 3'

146.135 \$1,000 3' - 3'3" Green Hunter Incentive Stake Class, † Per USHJA Specifications Entry Fee: \$80+\$20 USHJA Fee \$300 \$220 \$130 \$80 \$60 \$50 \$40 \$30 \$30 \$20 \$20 \$20

To enter, horses must be enrolled in the USHJA -Green Incentive Program. It is the exhibitor's responsibility to enroll his horse in a timely manner to be eligible to participate and receive points.

AMATEUR OWNER HUNTER

Amateur Owner Hunter 3'6"

Week 1&2

Entry Fee: \$180.00 Fences: 3'6"

Class 164. Amateur Owner Hunter 3'6" U/S

Class 165. Amateur Owner Hunter 3'6"

Class 166. Amateur Owner Handy Hunter 3'6"

Class 167. Amateur Owner Hunter Stake 3'6"

Class 167 Stake: \$40 \$25 \$15 \$10 \$5 \$5

Week 3

Entry Fee: \$225.00 Fences: 3'6"

Classes 165-168: \$40 \$30 \$25 \$15 \$10 \$10

Class 164. Amateur Owner Hunter 3'6" U/S

Class 165, 166, 167 Amateur Owner Hunter 3'6"

Class 168. Amateur Owner Handy Hunter 3'6"

Week 3

Entry Fee: \$225 Fences 3'6"

Class 170-173: \$40 \$30 \$25 \$15 \$10 \$10

Class 169. Junior Hunter 3'6" 15&U U/S

Class 170, 171, 172 Junior Hunter 3'6" 15& U

Class 173. Junior Handy Hunter 3'6" 15&U

Junior Hunter 16-17 3'6"

Week 1&2

Entry Fee \$180.00 Fences 3'6"

Class 174. Junior Hunter 3'6" 16-17 U/S

Class 175. Junior Hunter 3'6" 16-17

Class 176. Junior Handy Hunter 3'6" 16-17

Class 177. Junior Hunter 3'6" Stake 16-17

Class 177 Stake: \$40 \$25 \$15 \$10 \$5 \$5

Amateur Owner Hunter 3'3"

Week 1&2

Entry Fee: \$180.00 Fences: 3'3"

Class 159. Amateur Owner Hunter 3'3" U/S

Class 160. Amateur Owner Hunter 3'3"

Class 161. Amateur Owner Handy Hunter 3'3"

Class 162. Amateur Owner Hunter Stake 3'3"

Class 162 Stake: \$40 \$25 \$15 \$10 \$5 \$5

Week 3

Entry Fee: \$225.00 Fences: 3'3"

Classes 160-163: \$40 \$30 \$25 \$15 \$10 \$10

Class 159. Amateur Owner Hunter 3'3" U/S

Class 160, 161, 162. Amateur Owner Hunter 3'3"

Class 163. Amateur Owner Handy Hunter 3'3"

Week 3

Entry Fee: \$225 Fences 3'6"

Class 175-178: \$40 \$30 \$25 \$15 \$10 \$10

Class 174. Junior Hunter 3'6" 16-17 U/S

Class 175, 176, 177 Junior Hunter 3'6" 16-17

Class 178. Junior Handy Hunter 3'6" 16-17

Junior Hunter 3'3"

Week 1&2

Entry Fee \$180.00 Fences 3'3"

Class 179. Junior Hunter 3'3" U/S

Class 180. Junior Hunter 3'3"

Class 181. Junior Handy Hunter 3'3"

Class 182. Junior Hunter 3'3" Stake

Class 182 Stake: \$40 \$25 \$15 \$10 \$5 \$5

Junior Hunter 15&U 3'6"

Week 1&2

Entry Fee \$180.00 Fences 3'6"

Class 169. Junior Hunter 3'6" 15&U U/S

Class 170. Junior Hunter 3'6" 15&U

Class 171. Junior Handy Hunter 3'6" 15&U

Class 172. Junior Hunter 3'6" Stake 15&U

Class 172 Stake: \$40 \$25 \$15 \$10 \$5 \$5

Week 3

Entry Fee: \$225 Fences 3'3"

Class 180-183: \$40 \$30 \$25 \$15 \$10 \$10

Class 179. Junior Hunter 3'3" U/S

Class 180, 181, 182 Junior Hunter 3'3"

Class 183. Junior Handy Hunter 3'3"

PONIES

Small/Medium Green Pony Hunter

Week 1&2

Entry Fee: \$160.00

200. Small/Med Green Pony Hunter U/S

201, 202. Small/Med Green Pony Hunter

203. Small/Med Green Pony Hunter Stake

Class 203: \$30 \$22 \$15 \$13 \$10 \$10

Week 3

Entry Fee: \$175.00

Class 201-203: \$40 \$25 \$20 \$10 \$5 \$5

200. Small/Med Green Pony Hunter U/S

201, 202, 203. Small/Med Green Pony Hunter

Large Green Pony Hunter

Week 1&2

Entry Fee: \$160.00

204. Large Green Pony Hunter U/S

205, 206. Large Green Pony Hunter

207. Large Green Pony Hunter Stake

Class 207: \$30 \$22 \$15 \$13 \$10 \$10

Week 3

Entry Fee: \$175.00

Class 205-207: \$40 \$25 \$20 \$10 \$5 \$5

204. Large Green Pony Hunter U/S

205, 206, 207. Large Green Pony Hunter

Small Pony Hunter

Week 1&2

Entry Fee: \$160.00

214. Small Pony Hunter U/S

215, 216*. Small Pony Hunter

217. Small Pony Hunter Stake

Class 217: \$30 \$22 \$15 \$13 \$10 \$10

Week 3

Entry Fee: \$175.00

Class 215-217: \$45 \$30 \$25 \$15 \$10 \$10

214. Small Pony Hunter U/S

215, 216*, 217. Small Pony Hunter

Medium Pony Hunter

Week 1&2

Entry Fee: \$160.00

219. Medium Pony Hunter U/S

220, 221*. Medium Pony Hunter

222. Medium Pony Hunter Stake

Class 222: \$30 \$22 \$15 \$13 \$10 \$10

Week 3

Entry Fee: \$175.00

Class 220-222: \$45 \$30 \$25 \$15 \$10 \$10

219. Medium Pony Hunter U/S

220, 221*, 222. Medium Pony Hunter

Large Pony Hunter

Week 1&2

Entry Fee: \$160.00

223. Large Pony Hunter U/S

224, 225*. Large Pony Hunter

226. Large Pony Hunter Stake

Class 226: \$30 \$22 \$15 \$13 \$10 \$10

Week 3

Entry Fee: \$175.00

Class 224-226: \$45 \$30 \$25 \$15 \$10 \$10

223. Large Pony Hunter U/S

224, 225*, 226. Large Pony Hunter

*Handy Hunter

PONY HUNTER CLASSIC

Class 500: Entry Fee: \$100.00

To be eligible, ponies must have entered, shown and completed the course in at least two classes within the Pony Hunter sections.

Classes #217, Small Pony, #222, Medium Pony, #226, Large Pony will be scored as the first round of the Classic. The top 12 rider and pony combination will return for second round. The second round start order will be established by the placement in the first round, with the highest scored pony returning last. Trophy and twelve ribbons to be awarded.

Awards

Twelve ribbons to be awarded

\$300 \$220 \$150 \$100 \$80 \$70 \$50 \$30

HUNTER DIVISIONS

OSF Hunter 3

Entry Fee: \$40 per class

- 350. OSF Hunter 3' U/S
- 351. OSF Hunter 3'
- 352. OSF Hunter 3'
- 353. OSF Hunter 3'
- 354. OSF Hunter 3'

OSF Hunter 2'9"

Entry Fee: \$40 per class

- 327. OSF Hunter 2'9" U/S
- 328. OSF Hunter 2'9"
- 329. OSF Hunter 2'9"

OSF Hunter 2'6"

Entry Fee: \$40 per class

- 360. OSF Hunter 2'6" U/S
- 361. OSF Hunter 2'6"
- 362. OSF Hunter 2'6"
- 363. OSF Hunter 2'6"
- 364. OSF Hunter 2'6"

Low Hunter 2'6"

Entry Fee: \$40 per class

- 23. Low Hunter 2'6" U/S
- 24. Low Hunter 2'6"
- 25. Low Hunter 2'6"

Schooling Pony Hunter

Entry Fee: \$50.00 Per Class

Open to all Schooling ponies. Ponies must be ridden by juniors.

6,7. Fences to be run in three sections:

Large 2-9", Medium 2'6", Small 2'0"

Open Hunter

Entry Fee: \$40.00 Per Class

Open to horses with no restrictions to age or status of rider.

- 10. Open Hunter
- 11. Open Hunter
- 12. Open Hunter
- 13. Open Hunter
- 14. Open Hunter
- 15. Open Hunter

612. Bit O Straw Classic

Entry Fee: \$50 Fences: 2'6" Two round Hunter Classic.

Open to Junior or Amateur riders. No cross entry of horse/pony or rider into the M&S Children's Horse, Pony or Adult Hunter Classic. No cross entry of rider into any rated Hunters or any class with fences of 3' or higher.

Baby Green Hunters 2'6"

Entry Fee: \$40 per class

- 355. Baby Green Hunter 2'6" U/S
- 356. Baby Green Hunter 2'6"
- 357. Baby Green Hunter 2'6"
- 358. Baby Green Hunter 2'6"
- 359. Baby Green Hunter 2'6"

USHJA Hunter 3'

Entry Fee: \$40 per class

- 370. USHJA Hunter 3' U/S
- 371. USHJA Hunter 3'
- 372. USHJA Hunter 3'
- 373. USHJA Hunter 3'
- 374. USHJA Hunter 3'

USHJA Hunter 2'9"

Entry Fee: \$40 per class

- 365. USHJA Hunter 2'9" U/S
- 366. USHJA Hunter 2'9"
- 367. USHJA Hunter 2'9"
- 368. USHJA Hunter 2'9"
- 369. USHJA Hunter 2'9"

Modified Child/Adult Hunter 2'6"

Open to Adult Amateur and Junior riders

Entry Fee: \$40 per class

- 321. Modified Child/Adult Hunter 2'6" U/S
- 322. Modified Child/Adult Hunter 2'6"
- 323. Modified Child/Adult Hunter 2'6"

Local Hunter

Entry Fee: \$40.00 Per Class Fences: 2'9"

Open to horses with no restrictions to age or status of rider

- 318. Local Hunter 2'9" U/S
- 319. Local Hunter 2'9"
- 320. Local Hunter 2'9"

***501. \$500 Marshall & Sterling
Children's Hunter Horse 15-17 Classic***

ENTRY FEE: \$50.00
WEEK 1 & 2

***506. \$500 Marshall & Sterling
Children's Hunter Horse 14 & Under Classic***

ENTRY FEE: \$50.00
WEEK 1 & 2
WEEK 3 COMBINED AGE GROUPS

***507. \$500 Marshall & Sterling
Children's Hunter Pony Classic***

ENTRY FEE: \$50.00
WEEK 1 & 2

***503. \$500 Marshall & Sterling
Adult Amateur Hunter Classic***

ENTRY FEE: \$50.00

Class Conditions

To be scored under the open numerical judging system. The top twelve horses from the first round will return to jump a second round in reverse order of their scores in the first round; lowest score going first and highest score going last. In case of ties, those orders will be drawn. Scores will be added from both rounds to determine winners. In case of ties for first place only, judges will confer to break ties. In all other cases, ties will remain, prize money will be divided and riders will toss a coin for the ribbons.

Eligibility

To be ridden by a junior or an adult amateur. To be eligible, the horse/rider combination must have entered and shown in one class over fences in the Children's Hunter Section or the Adult Amateur Hunter Section.

For Children's Hunter Classic, classes #43, 46-Children's Hunter Pony and #49, 52-Children's Hunter Horse will be scored as the first round of the Classic.

For Adult Amateur Hunter Classic, classes #28-Adult Amateur Hunter 18-35, #31-Adult Amateur Hunter 36- 49 and #34-Adult Amateur Hunter 50+ will be scored as the first round of the Classic.

Awards

Ten ribbons to be awarded
\$150 \$110 \$75 \$50 \$40 \$35 \$20 \$20

CLASSES 501, 503, AND 506 ARE MEMBER EVENTS OF THE NAL AND WIHS, WEEK 3 ONLY

ADULT AMATEUR AND CHILDREN'S HUNTER DIVISIONS

ADULT AMATEUR HUNTER

To be conducted under current Zone II specifications posted in Horse Show Office.

Adult Amateur Hunter 18-35

Entry Fee: \$40.00 Per Class

- 26. Adult Amateur Hunter 18-35 U/S
- 27. Adult Amateur Hunter 18-35
- 28. Adult Amateur Hunter 18-35*

Adult Amateur Hunter 36-49

Entry Fee: \$40.00 Per Class

- 29. Adult Amateur Hunter 36-49 U/S
- 30. Adult Amateur Hunter 36-49
- 31. Adult Amateur Hunter 36-49*

Adult Amateur Hunter 50+

Entry Fee: \$40.00 Per Class

- 32. Adult Amateur Hunter 50+ U/S
- 33. Adult Amateur Hunter 50+
- 34. Adult Amateur Hunter 50+*

(*) NAL

CHILDREN'S HUNTER

To be conducted under current Zone II specifications posted in Horse Show Office.

Children's Hunter Pony-Small/Medium

Entry Fee: \$40.00 Per Class

- 41. Children's Hunter Pony Sm/Med U/S
- 42. Children's Hunter Pony Sm/Med
- 43. Children's Hunter Pony Sm/Med

Children's Hunter Pony-Large

Entry Fee: \$40.00 Per Class

- 44. Children's Hunter Pony Large U/S
- 45. Children's Hunter Pony Large
- 46. Children's Hunter Pony Large

Children's Hunter Horse 14 & Under

Entry Fee: \$40.00 Per Class

- 47. Children's Hunter Horse 14&U U/S
- 48. Children's Hunter Horse 14&U
- 49. Children's Hunter Horse 14&U

Children's Hunter Horse 15-17

Entry Fee: \$40.00 Per Class

- 50. Children's Hunter Horse 15-17 U/S
- 51. Children's Hunter Horse 15-17
- 52. Children's Hunter Horse 15-17*

Derbies

Week 3 Only

\$1,500 USHJA PONY HUNTER DERBY

Class: 602 Entry Fee: \$150

Open to all size ponies. Fences: Small 2'3", Medium 2'6", Large 2'9"-3'. Run in accordance with USHJA Pony Hunter Derby Specifications.

Prize money: \$450, \$330, \$195, \$120, \$90, \$75, \$60, \$45, \$45, \$30, \$30, \$30

\$1,000 CHILD/ADULT AMATEUR HUNTER DERBY

Class: 601 Entry Fee: \$150

Open to horses ridden by a junior rider or adult amateur. Fences 2'6" Judged by open numerical system.

Top 12 after first round will return for handy (second round) in reverse order.

Prize Money: \$300 \$220 \$130 \$80 \$60 \$50 \$40 \$30 \$30 \$20 \$20 \$20

\$5,000 OLD SALEM FARM HUNTER DERBY

Class 600

Entry Fee: \$250

Open to horses and riders who have not competed in the Child/Adult Hunter Derby at the same horse show.

Fences 3'3" Judged by open numerical system.

Top 12 after first round will return for handy (second round) in reverse order.

Prize Money Awarded: \$1,500, \$1,100, \$650, \$400, \$300, \$250, \$200, \$150, \$150, \$100, \$100, \$100



2019 Fall Classic \$1,500 USHJA Pony Hunter Derby

photo SEL Photography

JUMPER DIVISIONS

NOMINATION FEE: \$225.00 Week 1
\$100.00 Week 2 & 3

Nominating fee: All horses showing in the Jumper Division must be nominated and must be paid by the closing date of entries for Children's/Adult, Junior, Amateur Owner, and Open Jumpers. A rotating jump order will be established.

Declarations: Declarations must be made in the Show Office on the appropriate form by 4:00 p.m. the day before the class is to be held.

Awards: Trophy and eight ribbons awarded in every class, unless otherwise specified.

Ties: Ties involving first place shall be jumped off. For all other ties, time taken to complete the first round will decide, unless otherwise stated.

Time Allowed: Time allowed based on a minimum speed of 382 yards per minute.

Attire: All riders in Grand Prix Field Classes are requested to wear jackets (except Schooling Jumper) and formal attire is requested for the Children's/Adult Jumper Classic, Junior/Amateur Owner Jumper Classic, and required for the Old Salem Farm Grand Prix, Grand Prix of North Salem and Old Salem Farm Jumper Classic.

Courses: Courses may consist of any combination of the following: brush; gates; planks; liverpools; panels; oxers; post and rails; coops; walls and natural obstacles including ditch; bank and water.

Poling & Animal Welfare: Manual poling and/or the use of bamboo pole offsets are prohibited. Any rider or trainer found poling or using offsets and/or who, in the opinion of the judges or committee, uses their whip or spurs in an excessive manner will be immediately eliminated from the class where the incident occurred, be suspended from further showing for a twenty-four hour period and will forfeit all entry fees for that class. Any horse upon which a violation of the manual poling and/or use of bamboo offset rule is perpetrated will be suspended from competition for a twenty-four hour period starting from the time of incident and forfeit all entry fees. Further violations by that exhibitor on the same horse or another horse will result in said exhibitor being barred from any further competition at this Show. All incidents will be reported by USEF Steward to the USEF for possible further investigations.

Championships: Champion and reserve will be awarded to the two horses scoring the most points in each of the following sections: Children's/Adult Jumper, Junior/Amateur Owner Jumper.

JUMPER FENCE HEIGHTS

.75m= 2'4" in height	1.25 m = 4'1" in height
.85m= 2'7" in height	1.30 m = 4'3" in height
.95 m = 3'1" in height	1.35 m = 4'5" in height
1.00 m = 3'3" in height	1.40 m = 4'7" in height
1.08 m = 3'6" in height	1.45 m = 4'9" in height
1.10 m = 3'7" in height	1.50 m = 4'11" in height
1.15 m = 3'9" in height	1.55 m = 5'1" in height
1.20 m = 3'11" in height	

JUMPER PRIZE MONEY (UNLESS OTHERWISE NOTED)

\$250	\$65 \$45 \$30 \$25 \$25 \$20 \$20 \$20
\$500	\$125 \$90 \$65 \$50 \$50 \$40 \$40 \$40
\$750	\$200 \$110 \$90 \$85 \$75 \$65 \$65 \$60
\$1,000	\$250 \$180 \$150 \$110 \$90 \$80 \$70 \$70
\$1,500	\$345 \$245 \$190 \$140 \$120 \$100 \$90 \$90 \$90
\$2,500	\$550 \$400 \$300 \$230 \$200 \$180 \$180 \$160 \$150 \$150
\$3,000	\$700 \$500 \$390 \$280 \$240 \$200 \$180 \$170 \$170 \$170

SCHOOLING AND TRAINING JUMPER

Open to any horse, no nomination required. Horses entered in Schooling or Training jumpers may enter any other jumper class for which they are eligible. All clean rounds will be awarded a blue ribbon.

Schooling Jumper

Entry Fee: \$100 per round

400. Schooling Jumper 1.0m

401. Schooling Jumper 1.0m

Training Jumper

Entry Fee: \$50 per round

380-383. Training Jumper -.75m

384-387. Training Jumper -.85m

388-391. Training Jumper -.95m

392-395. Training Jumper - 1.0m

396-399. Training Jumper -1.10m

YOUNG JUMPERS

The Young Jumper program has been organized to provide an opportunity for tomorrow's Grand Prix horses to compete in meaningful competition against their peers. For YJC Program Rules and Specifications, visit www.youngjumpers.com. Horses competing in the 6 and 7 Year Old Young Jumpers are restricted to those who have never competed in an Open Jumper class offering \$25,000 in prize money.

450. \$500 5-6 YO Young Jumper 1.15m

452. \$500 5-6 YO Young Jumper 1.20m

Entry Fee: \$60.00 per class

453. \$1,000 5-6 YO Young Jumper 1.20m

Entry Fee: \$70.00 per class

OPEN JUMPERS

Week 1

Open Jumper 1.10m

Entry Fee: \$60.00 per class

431. Open Jumper II2.1

Week 2

Open Jumper 1.10m

Entry Fee: \$60.00 per class

428. \$500 Open Jumper II2b

430. \$500 Open Jumper II2b

431. \$500 Open Jumper II2.1

Week 3

Open Jumper 1.10m

Entry Fee: \$60.00 per class

431. \$500 Open Jumper II2b

432. \$500 Open Jumper II2b

Week 1

Open Jumper 1.20m

Entry Fee: \$60.00 per class

420. \$1,000 Open Jumper II2.1

433. \$1,000 Open Jumper II2b

461. \$1,000 Open Jumper II2b

Week 2

Open Jumper 1.20m

Entry Fee: \$60.00 per class

418. \$750 Open Jumper II2b

419. \$750 Open Jumper II2b

420. \$750 Open Jumper II2.1

Week 3

Open Jumper 1.20m

Entry Fee: \$60.00 per class

420. \$750 Open Jumper II2b

433. \$750 Open Jumper II2b

Week 1

Open Jumper 1.30m

Entry Fee: \$90.00 per class

422. \$1,500 Open Jumper II2b

423. \$1,500 Open Jumper II2.1

448. \$1,500 Open Jumper II2b

Week 2

Open Jumper 1.30m

Entry Fee: \$70.00 per class

421. \$1,000 Open Jumper II2b

422. \$1,000 Open Jumper II2b

423. \$1,000 Open Jumper II2.1

Week 3

Open Jumper 1.30m

Entry Fee: \$70.00 per class

423. \$1,000 Open Jumper II2b

434. \$1,000 Open Jumper II2b

Week 1

Open Jumper 1.35m

Entry Fee: \$150

425. \$3,000 Open Jumper II2b

449. \$3,000 Open Jumper II2.1

Week 1

Open Jumper 1.40m

Entry Fee: \$150.00 per class

437. \$3,000 Open Jumper II2b

Children's /Adult Jumper

Open to horses shown by juniors or adults who possess current USEF amateur certification. Zone 2 rules apply and will be posted in show office.

Horses showing in the Children's and Adult Amateur Jumper classes must pay Nominating Fee and must be recorded with the USEF (see Jumper Division specifications).

Champion to be awarded. In the event of a tie, the higher place in the Classic will break the tie.

To be eligible to show in CLASSIC 504 & 436, the horse must have entered in at least one other class in the Children's/Adult Jumper Section.

Horse and rider combination can only compete in one Classic, Stake or highest prize money class at horse show.

Week 1

OSF Child/Adult Jumper .85m

Entry Fee \$40.00 per class

445. OSF Child/Adult Jumper Ii2b

446. OSF Child/Adult Jumper Ii2b

477. OSF Child/Adult Jumper Ii2b

Week 2

OSF Child/Adult Jumper .85m

Entry Fee \$40.00 per class

445. OSF Child/Adult Jumper II2.1

446. OSF Child/Adult Jumper II2.1

447. OSF Child/Adult Jumper Ii2b

Week 3

OSF Child/Adult Jumper .85m

Entry Fee \$40.00 per class

445. OSF Child/Adult Jumper II2.1

446. OSF Child/Adult Jumper Ii2b

447. OSF Child/Adult Jumper II2.1

Week 1

Children/Adult Jumper 1.0m

Entry Fee: \$40 per class

440. Child/Adult Jumper II2b

441. Child/Adult Jumper Ii2b

442. Child/Adult Jumper II2b

Week 2

Children/Adult Jumper 1.0m

Entry Fee: \$40 per class

440. \$250 Child/Adult Jumper II2.b

441. \$250 Child/Adult Jumper II2.1

442. \$250 Child/Adult Jumper II2b

449. \$250 Child/Adult Jumper II2.1

Week 3

Children/Adult Jumper 1.0m

Entry Fee: \$40 per class

440. \$250 Child/Adult Jumper II2b

441. \$250 Child/Adult Jumper II2.1

442. \$250 Child/Adult Jumper II2b

435. \$250 Child/Adult Jumper II2.1

Week 1

Children/Adult Jumper 1.10m

Entry Fee: \$40 per class

443. \$500 Child/Adult Jumper II2b

444. \$500 Child/Adult Jumper II2.1

Week 2

Children/Adult Jumper 1.10m Entry

Fee: \$40 per class

443. \$500 Child/Adult Jumper II2.1

444. \$500 Child/Adult Jumper II2b

Week 3

Children/Adult Jumper 1.10m Entry

Fee: \$40 per class

444. \$500 Child/Adult Jumper II2.1

448. \$500 Child/Adult Jumper II2b

Junior/Amateur Owner Jumper

Horses to be ridden by a junior or an amateur owner or an amateur member of the owner's family who is no longer eligible to compete as a junior. Horses and riders may not cross enter into Children's/Adult Amateur Jumper. Classes may be split if entries warrant. To be eligible to show in CLASSICS 519 & 520 the horse must have entered in at least one Junior/Amateur Jumper class. Champion to be awarded. In the event, of a tie the higher place in the Classic

Week 1

Junior/Amateur Owner Jumper Low

Entry Fee:\$70.00 per class

406. \$1,000 Jr/AO Jumper 1.20m II2b

424. \$1,000 Jr/AO Jumper 1.20m II2.1

Week 2

Junior/Amateur Owner Jumper Low

Entry Fee: \$60.00 per class

406. \$750 Jr/AO Jumper 1.20m II2.1

407. \$750 Jr/AO Jumper 1.20m II2b

Week 3

Junior/Amateur Owner Jumper Low

Entry Fee: \$60.00 per class

406. \$750 Junior A/O Jumper 1.20m II2b

424. \$750 Junior A/O Jumper 1.20m II2.1

Week 1

Junior/Amateur Owner Jumper High

Entry Fee: \$90.00 per class

426. \$1,500 Jr/AO Jumper 1.30m/1.35m II2b

427. \$1,500 Jr/AO Jumper 1.30m/1.35m II2.1

Children's/Adult Jumper Classics
504. Marshall & Sterling Child/Adult Jumper Classic 1.10m

WEEK 1 Entry Fee: \$150.00 Prize Money \$2,500
\$550 \$400 \$300 \$230 \$200 \$180 \$180 \$160 \$150 \$150

WEEK 2&3 Entry Fee: \$80.00 Prize Money \$1,500
\$350 \$250 \$200 \$150 \$120 \$95 \$95 \$80 \$80 \$80

436. Children's/Adult Jumper Classic 1.0m

WEEK 3 Entry Fee: \$50.00 Prize Money \$500
\$100 \$80 \$65 \$60 \$55 \$50 \$45 \$45

Class Conditions

Conducted under Table II.2(b). Formal Attire Requested.

Eligibility

Class 504, & 436 to be ridden by a junior/adult amateur rider.
To be eligible, a horse must have entered in at least one other class in the Children's/Adult Jumper Section.

Awards

Twelve ribbons to be awarded

Junior/Amateur Owner Jumper Classics
519. Junior/Amateur Owner Jumper Classic Low II 2b 1.25m

WEEK 1 Entry Fee: \$225 Prize Money: \$5,000
\$1,500 \$1,000 \$500 \$400 \$350 \$300 \$250 \$250 \$225 \$225

WEEK 2&3 Entry Fee: \$150 Prize Money: \$2,500
\$550 \$400 \$300 \$230 \$200 \$180 \$180 \$160 \$150 \$150

520. Junior/Amateur Owner Jumper Classic High II 2b 1.35m/1.40m

WEEK 1 Entry Fee: \$300 Prize Money: \$7,500
\$2,200 \$1,500 \$800 \$600 \$525 \$450 \$400 \$375 \$350 \$300

Eligibility

To be ridden by a junior or adult rider. To be eligible, a horse must have entered in
at least one other class in the Junior/Amateur Owner Jumper Section

Formal Attire Requested

Twelve ribbons to be awarded.

700. \$10,000 Old Salem Farm Jumper Classic

Saturday September 19, 2020

Saturday September 26, 2020

Entry Fee: \$320

1.35m

Awards and Prize Money

Ribbons First to Twelve

\$3,000 \$2,000 \$1,000 \$700 \$600 \$500 \$450 \$380 \$380 \$350 \$320 \$320

513. \$25,000 Grand Prix Of North Salem presented by The Kincade Group

Friday September 11, 2020

Entry Fee: \$450

II, 2a National Standard

Awards and Prize Money

Ribbons First to Twelve

\$7,500 \$5,500 \$3,250 \$2,000 \$1,500 \$1,250 \$1,000 \$750 \$750 \$500 \$500 \$500

800. \$75,000 Old Salem Farm Grand Prix presented by The Kincade Group

Sunday September 13, 2020

Entry Fee: \$1,500

II,2a National Standard

Awards and Prize Money

Ribbons First to Twelve

\$22,500 \$16,500 \$9,750 \$6,000 \$4,500 \$3,750 \$3,000 \$2,250 \$2,250 \$1,500 \$1,500 \$1,500



***2019 \$10,000 Old Salem Farm Jumper Classic
Mclain Ward***



CLASS 900----SEPTEMBER 19, 2020

ASPCA Maclay Regional Championships 2020 Qualifying Criteria



2020 JUDGES: CHANCE ARAKELIAN & WALTER KEES

In light of the COVID-19 pandemic the National Horse Show is revising the Qualifying Criteria for the 2020 ASPCA Maclay Regional Championship Classes.

2020 ASPCA Maclay Regional Championship Classes

Competing in any 2020 ASPCA Maclay Regional Championship Classes are optional. Riders that are qualified for the 2020 ASPCA Maclay Finals are eligible, but not required, to compete in any ASPCA Maclay Regional Championship class conducted by the NHSAA. Riders may qualify to compete in any ASPCA Maclay Regional Championship class conducted by the NHSAA based upon winning the point requirements of their own official point state of residence with the USEF in ASPCA classes as seen below:

Points Required to Qualify for the ASPCA Maclay Regionals by State Per Rider's Official State of Residence per USEF Records (For 2020 Qualifying Year, Required Points adjusted due to COVID-19) Effective August 1, 2020**							
State	Points	State	Points	State	Points	State	Points
Alabama	3	Illinois	7	Nebraska	7	South Carolina	7
Alaska	3	Indiana	3	Nevada	3	South Dakota	7
Arizona	3	Iowa	7	New Hampshire	3	Tennessee	7
Arkansas	3	Kansas	3	New Jersey	13	Texas	3
California	7	Kentucky	3	New Mexico	3	Utah	3
Canada	3	Louisiana	3	New York	15	Vermont	3
Colorado	3	Maine	3	North Carolina	7	Virginia	7
Connecticut	14	Maryland	6	North Dakota	3	Washington	3
D.C.	3	Massachusetts	10	Ohio	7	West Virginia	3
Delaware	6	Michigan	3	Oklahoma	3	Wisconsin	3
Florida	11	Minnesota	3	Oregon	3	Wyoming	3
Georgia	7	Mississippi	3	Pennsylvania	11	Outside US	3
Hawaii	3	Missouri	3	Puerto Rico	3		
Idaho	3	Montana	3	Rhode Island	9		

**Point requirements will continue to be monitored and will be adjusted downward if specific states are unable to resume competition or if other unforeseen circumstances affect the 2020 qualifying period. These downward adjustments, if any, will be at the discretion of the National Horse Show and will be publicized at the time of the adjustment.

Schooling Area Protocol for Regionals and Finals USHJA Equitation

Task Force

- Official schooling area will be set one hour before the start of the competition.
- Schooling fences will be set as a straight line of oxers across the middle of the official schooling area.
- Each jump will have at least four standards, four rails and four cups.
- Each jump must be flagged.
- Each jump may be set as an oxer.
- Each jump may be set as a vertical.
- Each jump may be set as a combination (Bounce, One Stride or Two Strides)
- Tarps (vinyl panels) and coolers are to be allowed. These may be used on the jump, under the jump or on the ground in front of or behind the jump. If they are used on the ground in front of or behind the jump they must be set on the ground a minimum of 9 feet and a maximum of 21 feet from the jump in either direction. They may not be set in such a way that they interfere with either the approach or landing of another jump.
- Straight lines may not be set.
- Bending lines may not be set.
- All other USEF Schooling Rules for the Equitation section will be enforced.

A woman wearing a black riding helmet and a dark t-shirt with 'ASPCA' and 'WE ARE' printed on it is smiling and hugging a brown horse. The background is a soft-focus outdoor scene with trees and a fence.

ADOPTABLE LOVABLE CAPABLE

Everything you know about
adoption is about to change.

Discover equine adoption at

myrighthorse.org

**THE RIGHT
HORSE
INITIATIVE**

A Program of the

ASPCA



The Leo Conroy Equitation Grant



Established to commemorate Leo Conroy's loyalty and dedication to the National Horse Show and the ASPCA Maclay – both held a special place in Leo's heart, having been a rider and trainer for most of his life.

The Leo Conroy Equitation Grant will be awarded to up to five (5) riders from each of the three Equitation Championships who demonstrate a financial need in order to participate at the National Horse Show.

- The Leo Conroy Equitation Grant is open to riders who qualify to compete in the ASPCA Maclay Finals through their Regional competitions, and those who qualify to compete in the Hamel Foundation NHS 3'3" Equitation Championship or the Taylor Harris Insurance Services Adult Equitation Championship.
- Selected riders will receive entry fees and stabling at the ASPCA Maclay Finals, the Hamel Foundation NHS 3'3" Equitation Championships or the Taylor Harris Insurance Services Adult Equitation Championship at the National Horse Show, and an additional stipend to cover show related expenses.
- Riders may apply Online from Sept. 13 – Oct. 2, 2020 at www.NHS.org.



NATIONAL HORSE SHOW

OCTOBER 23 - NOVEMBER 1, 2020

www.NHS.org | 859.608.3709 | info@nhs.org



Created by equine professionals to meet the demands & unique risks of equestrians.

As an employee-owned company, our pride in ownership drives us to be an insurance agency unlike any other.

**Marshall
& Sterling**
INSURANCE
EQUISPORT DIVISION

www.MarshallSterling.com/Equisport

12798 West Forest Hill Blvd., Suite 102 Wellington, FL 33414 • Tel: 800-836-3046 • Fax: 561-557-5305

blue *Infinite*

The Saddle 3.0



VoltaireDesign.com



STAY IN STRIDE AND IN COMFORT.

Don't be thrown by travel.
Stay at Residence Inn Danbury and you'll enjoy...

Studio, One Bedroom or Two Bedrooms Suites
Living Room with a Sleeper Sofa
Full Kitchens in all Suites
Complimentary Hot Breakfast
Residence Inn Mix - Light Dinner Fare Monday-Wednesday
On-site Laundry
Pet Friendly (Fees Apply)

*Book now and receive a special discounted rate when you refer to
"Old Salem Farm"*

For online reservations, go to Marriott.com > Corporate ID: B3U

Residence INN.
BY MARRIOTT

22 Segar Street | Danbury, CT 06810
P: 203.797.1256 | www.marriott.com/DXRR1



PUT US BEHIND YOU TODAY

**EBY • TRAILERS USA • SUNDOWNER
HAWK and KINGSTON**



SHOP WITH CONFIDENCE

2201 State Route 17K • Montgomery, NY 12549

- WE SERVICE WHAT WE SELL
- ON SITE DMV
- OUT OF STATE TRANSITS
- FULL SERVICE FACILITY



For more information visit
www.congelositrailer-sales.com
or call 1-888-310-2246

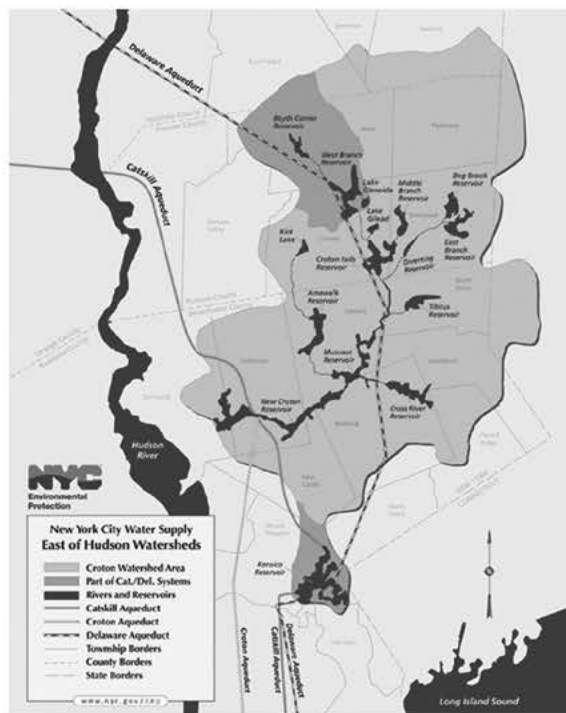
We Carry All Types of Trailers
HORSE • STOCK
CARGO • DUMP
EQUIPMENT

CLEAN DRINKING WATER STARTS WITH YOU.



If you own land in the Croton Watershed — a 375-square mile area across New York's Westchester, Putnam and Dutchess Counties and Fairfield County, Connecticut — you may be eligible for one or more of our programs.

All farms and woodlands located within the New York City Watershed have an impact on water quality. The Watershed Agricultural Council can help you tailor a land management plan for your property that keeps water clean from the start. Simple measures like sampling and testing your soil will guide you on the health of your pasture and help reduce overgrazing. Our technical staff can direct you on proper manure management techniques like composting too. You might qualify for financial assistance to implement these and many other conservation practices! Call us at **(914) 962-6355** to find out what you can do to protect your farm, the environment and drinking water quality for 9 million consumers.



For more information visit: nycwatershed.org

Watershed Agricultural Council
nycwatershed.org



FarmVet

WE ARE HORSE HEALTH



**Stop by our Mobile Store
on Show Grounds!**

AFTER THE SHOW SHOP ONLINE AT FARMVET.COM OR CALL 888.837.3626!

GET WILD AT THE WOLF CONSERVATION CENTER!

THE WOLF CONSERVATION
CENTER OFFERS A UNIQUE
AND MEMORABLE LEARNING
EXPERIENCE FOR ALL AGES.

COME HOWL WITH THE WOLVES!

WWW.NYWOLF.ORG (914)-763-2373

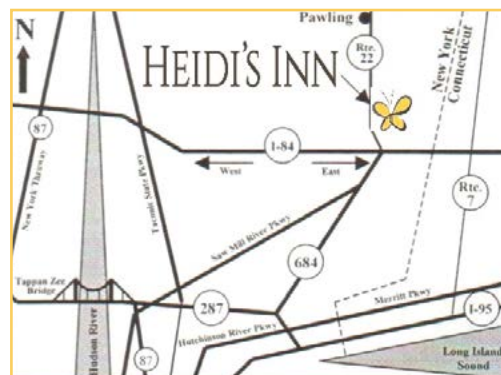


WOLF
CONSERVATION CENTER
www.nywolf.org



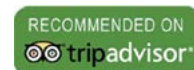
HEIDI'S INN

Large guest rooms with kitchens • Best TV programming • Outdoor pool • Fast free wifi



845-279-8011

1270 Route 22 • Brewster, NY 10509
www.heidisinn.com





**Animals speak louder
than words.**

If there's greatness on the inside,
it shows on the outside.



FEED GREATNESS™



Purina® understands there's a lot riding on our horses. It's why we partner with them and why our feed of choice is Purina® Omolene #500® horse feed.

With the Amplify® high-fat nugget and pro-energy system, my horse gets the energy he needs so we can perform at the top of our game for the entire length of the event.

To learn more visit your Purina Retailer
or PurinaMills.com/Horse-Feed



Heather Caristo-Williams
Sponsored by Purina



Hotel Zero Degrees



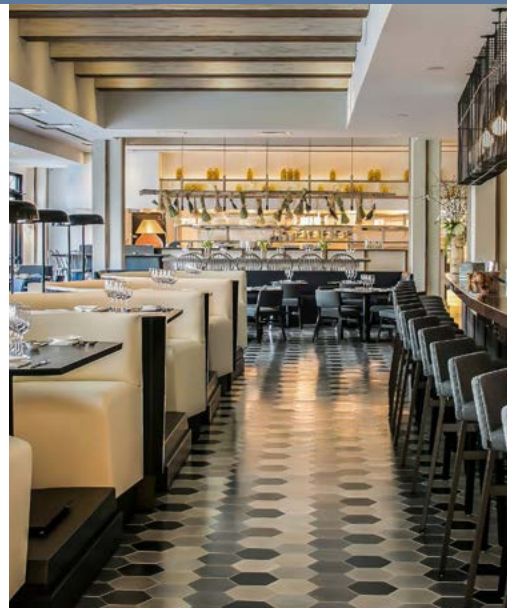
Danbury's Newest Boutique Hotel

- 114 Guest Rooms & Suites
- Complimentary breakfast & Wi-Fi
- Indoor/Outdoor Event Space & Dining
- *The Lawn*, featuring outdoor fire pit and lounge space
- Starbucks Coffee 24/7
- State of the Art Fitness Center



Terra of Danbury

- Authentic Northern Italian Cuisine
- Wood-Burning Oven Pizza & Signature Dishes
- Seasonal Menus & Craft Cocktails
- Open Kitchen Dining & Community Tables
- An Ambient & Casual Dining Experience
- Reservations (203) 730-9595



For more information visit:
hotelzerodegrees.com/hotels/danbury/
reservationsdanbury@hotelzerodegrees.com

15 Milestone Rd.
 Danbury, CT 06810
 tel: 203-730-9200



Tricia Booker Photography

OUR PEOPLE ARE YOUR BEST INSURANCE

As a market leader, **Marshall & Sterling Insurance** embodies the professionalism, service, attentive care and resources you deserve when selecting an insurance agent to protect what's important to you. **Marshall & Sterling's Equisport Division** was created by equine insurance professionals to meet the demands and unique risks of horse owners. As an employee-owned company, our pride in ownership drives us to be an insurance agency unlike any other.

We know how to protect horse owners. **It's our business!**



Equisport Division

**Marshall
& Sterling**
INSURANCE

800-836-3046

marshallsterling.com/equisport

Kingsley's Market

DELI AND PIZZERIA



252 June Road
North Salem, NY 10560
914-669-5324
Fax 914-485-1364
www.kingsleysmarket.com

Hours:
Mon-Sat 5am-6pm • Sun 6am-5pm



Directions – left out of driveway, 1/2 mile on left hand side.

proudly
serving



Welcome to North Salem!



HAYFIELDS

PETALS • PRODUCE • PROVISIONS

BREAKFAST - LUNCH - BAKED GOODS - SNACKS
COFFEE - ESPRESSO - SMOOTHIES - ICE CREAM



Located at the corner of 121 & Bloomer Rd

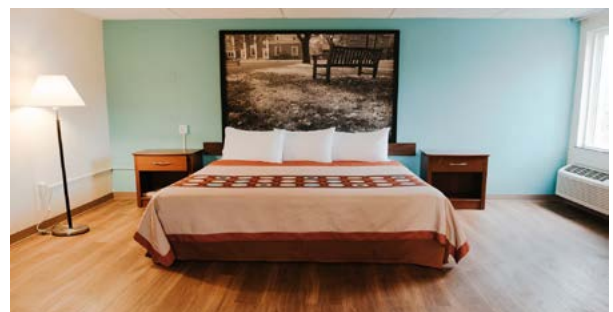
914.669.8275 - www.hayfieldsmarket.com

WYNDHAM

HOTELS & RESORTS



3 lake ave Ext. Danbury CT
203-743-0064



Excellent location, directly off I-84 exit 4,
Mini-fridge and microwave in all guest rooms
Complimentary breakfast
Pet friendly



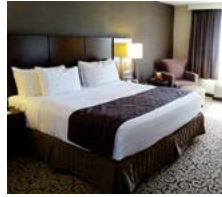
CROWNE PLAZA®

DANBURY

18 Old Ridgebury Road | Danbury, Connecticut 06810

203.794.0600

www.cpdanbury.com



243 Spacious Guest Rooms And Suites

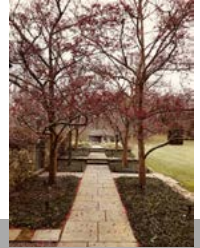
Pet Friendly | Complimentary Wifi | Indoor Pool

3 Restaurants Including Hat City Bar

15 Minutes To Old Salem Farm

Svendsen & Keller

we make paradise possible



**Design, Construction & Maintenance
of innovative New England landscapes**

We specialize in equestrian properties.

635 North Salem Road
Ridgefield, CT 06877
203.431.9914

SvendsenandKeller.com



Old Salem Farm Spring Horse Shows **EQUINE HEALTH REQUIREMENTS/PROTOCOLS**

- 1) ALL HORSES BEING BROUGHT ON THE SHOW GROUNDS OF OLD SALEM FARM MUST BE ACCOMPANIED BY A "STATEMENT OF HEALTH" PRIOR TO UNLOADING.
 - a) The "Statement of Health" must be signed and dated by a Licensed Veterinarian within seven (7) days of arrival of Old Salem Farm Show grounds.
 - b) The "Statement of Health" must show that the following horse:
 - 1) Been enrolled in a regular and consistent program of vaccination against EHV-1 with the most recent booster being within 180 days.
 - 2) Have not shown symptoms of or been treated for EHV-1 within the past 28 days.
 - 3) Have not been exposed to any horses or ponies that have been treated for or shown symptoms of EHV-1 within the past 28 days.
- 2) Negative Coggins within one year.
- 3) Horses traveling from other than New York State require a Certificate of Health.

HEALTH PROTOCOLS:

Please be mindful of routine biosecurity measures to prevent any potential spread of contagious diseases

Avoid nose to nose contact between horses from different stables.

Avoid shared or communal water buckets.

NOTE: Please feel free to contact our show veterinarian with any questions regarding these requirements.

These requirements have been drafted by the management from this horse show in consultation with our show veterinarian and the New York State division of Animal Industry.

The horse show manager reserves the right to request horses be subject to examination by a licensed veterinarian in determining whether such animals are, or have been infected/exposed, or are likely to become infected with an infectious or contagious disease. All exhibitors are encouraged to review the equine health transport requirements for New York State prior to arrival. These requirements are for the safety of all horses entering the horse show facility.



GEORGE KATIPER

A LONG STRIDE BEYOND THE EXPECTED



SUE WEANLET

Proud to partner with

Old Salem Farm

Spring Horse Shows

EQ MEDIA

The full-service media agency
with an equestrian focus

EQmedia.agency
612-209-0310

USEF Competition Name: OLD SALEM FARM (9/8-13), (9/15-19), (9/23-27) 2020

USEF#: 339390, 337516, 6715

Competition Division(s) and Rating(s): LEVEL 5 JUMPERS, REGIONAL I HUNTERS, LEVEL 2 JUMPERS REGIONAL II HUNTERS, LEVEL 2 JUMPERS NATIONAL HUNTERS

FINALLY, THE INSURANCE YOU NEED AT A PRICE YOU CAN AFFORD



HEALTH & INSURANCE BENEFITS



Now with just a few clicks, you can purchase the valuable coverage you and your family need.

You deserve the peace of mind that comes with having affordable, easy-to-understand benefits for you and your family. Now with your paid-fan or competing **USEF Membership**, you can sign up for a range of benefits from well-known, established insurance companies, with savings up to 35% or more!

You Can Get Coverage For...



Individual/
Family Health
Insurance



Teledoc



Global Health
Insurance



Personal Liability,
Death & Disability
Insurance



Group Health
Insurance



Free Mental
Health First Aid



Ground & Air
Ambulance



Financial
Lock



Dental, Vision, Disability, Accident,
Critical Illness, and Life Insurance



Farm, Equine, & Pet Insurance



These benefits can be customized for individuals, families, business owners, executives, and your employees

Visit **USEF.org/insurance** to learn more and find your rate today.
Or call us at **(800) 349-1082** to speak with your USEF benefits team.





HEART

Humane Equine Aid and Rapid Transport

Compassionate transport for the equine athlete.

We thank the many people who have supported HEART throughout the year. Without you, we could not have become the well-equipped and highly-trained equine transport that we are today. Watch for the HEART equine ambulances, stationed at events from Florida to Kentucky to New York. For schedule updates, news, to make a donation or learn more about HEART please visit our website: equineambulance.com or our Facebook page:

HEART-Equine-Ambulance.

HEART Equine Ambulance • 179 Acorn Hill Drive • Madison, VA 22727

Tel: (703) 304-5248 • www.equineambulance.com

Board of Directors

Robin Sweely, President;
Shanette Barth Cohen, Vice President;
Sharon MacDonald, Secretary;
Anthony Hitchcock, Treasurer

Members at Large

Reyna Archer, Joanna Wahl Feffer,
Bridget Hallman, Carter Iseman,
Caitlin Lane, Jessica Lohman,
Mary Helen Shaughnessy, Debbie Stephens



HEART (Humane Equine Aid & Rapid Transport, Inc.) is a 501.c.3 charitable corporation.



Tradition honors tradition.

Great American is proud to support a tradition of equine competition of the highest caliber with a tradition of specialized protection unmatched in the insurance industry.



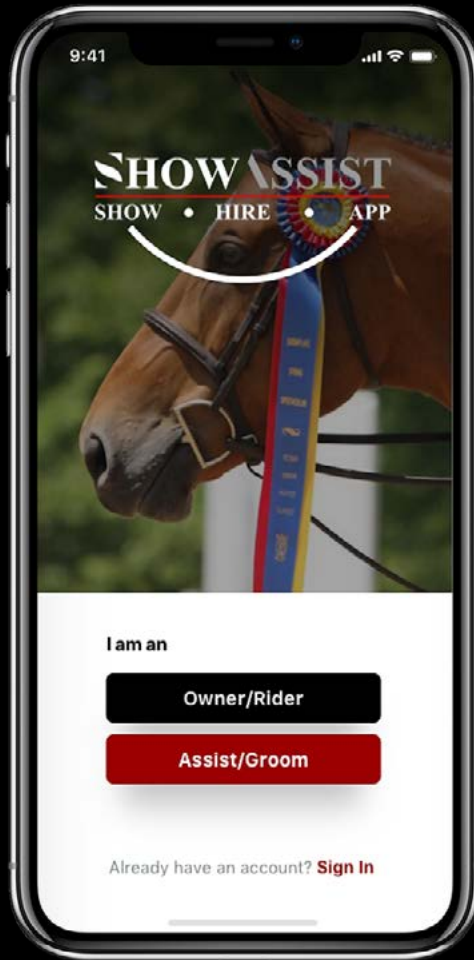
- Agribusiness
- Equine Farm & Ranch

Regional Office | Ocala, FL
www.GAIG.com

Coverage underwritten by Great American Insurance Company, Great American Assurance Company, Great American Insurance Company of New York and Great American Alliance Insurance Company, authorized insurers in all 50 states and D.C.; and Great American Security Insurance Company, an authorized insurer in all 50 states and D.C., except Vermont. ©2016 Great American Insurance Company. 301 E Fourth Street, Cincinnati, OH 45202

SHOW ASSIST

SHOW • HIRE • APP



PEOPLE-CENTERED. SHOW-DRIVEN.

ShowAssist is an on-demand hiring mobile app that connects owners, trainers and riders to experienced grooms, braiders, bodyworkers, stall cleaners and other support staff to provide temporary assistance while at rated USEF and Equestrian Canada shows. It is free to post jobs and to apply!

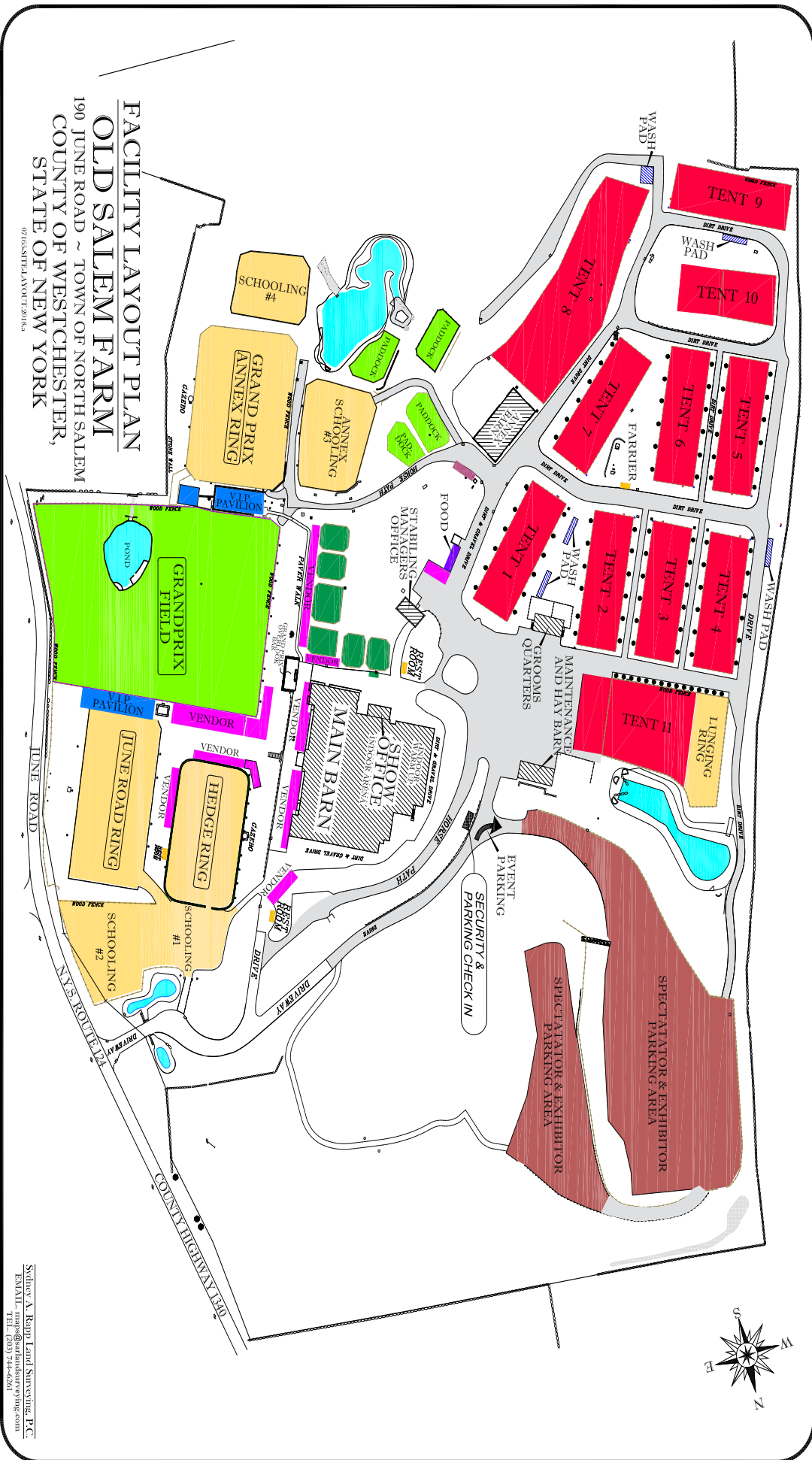
Download today!



SHOWASSIST.ORG

FACILITY LAYOUT PLAN OLD SALEM FARM 190 JUNE ROAD ~ TOWN OF NORTH SALEM COUNTY OF WESTCHESTER, STATE OF NEW YORK

07/10/2014 11:40:12 AM



Survey A. Rupp Land Surveying, P.C.
 EMAIL: map@rupslandsurveying.com
 TEL: (800) 744-6061



**PALM BEACH
INTERNATIONAL
ACADEMY**

Welcome to Our World.

Sportfot



Academics for Equestrians

Allowing today's student-athletes to maintain academic excellence while training, traveling, and competing.

- Seasonal Academics in Conjunction with Schools
- Full Time Accredited K-12 Programs
- Traditional Tutoring
- ACT/SAT Prep; College Counseling
- Summer Enrichment
- University Programs and Classes

The Official Education Sponsor of Old Salem Farm Fall Horse Shows



**PALM BEACH
INTERNATIONAL ACADEMY**
BOCA RATON | WELLINGTON | PANTHERS ICE DEN

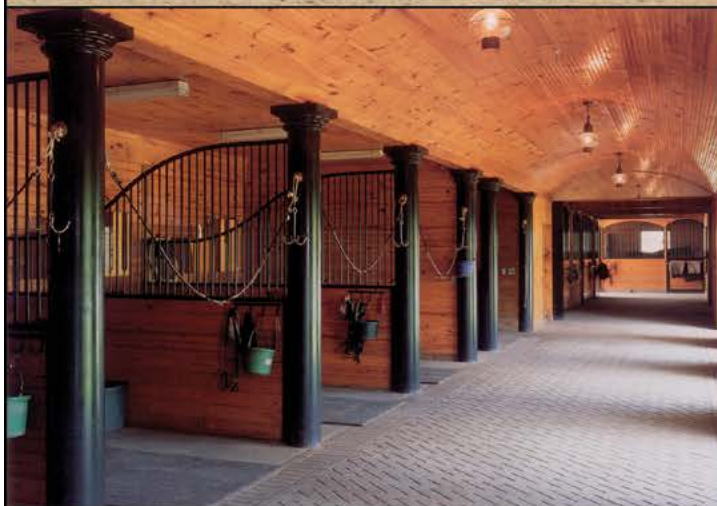
pbiafl.com | 561.338.3811

Joanne Weiner, Founding & Executive Director



OLD TOWN BARNES

CRAFTED WITH CARE IN THE EQUINE TRADITION



BARNES & FARMS

SINCE 1982

Old Town Barns brings custom craftsmanship to the design and construction of barns, stables, indoor riding arenas, outbuildings and living quarters.

Zublin Construction Services, Inc.
Pawling, NY
Tel 845.855.1450
www.OLDTOWNBARNES.COM

Please contact us to discuss your project. We are available at any time to help develop your ideas, so please feel free to call or email us to get started.